



SPORT
TRAINER™

::575

OPERATING GUIDE

PLEASE READ THIS ENTIRE GUIDE BEFORE BEGINNING

Hereinafter Radio Systems Corporation®, Radio Systems PetSafe Europe Ltd., Radio Systems Australia Pty Ltd. and any other affiliate or Brand of Radio Systems Corporation may be referred to collectively as "We" or "Us".

Thank you for choosing SportDOG Brand® training products. Used properly, this product will help you train your dog efficiently and safely. To ensure your satisfaction, please review this owner's manual thoroughly. If you have questions regarding this product's operation, please see this manual's Frequently Asked Questions or Troubleshooting sections, contact our Customer Care Center at 1-800-732-0144, visit our website at www.sportdog.com, or view our support videos at www.youtube.com/sportdogbrand.

To get the most protection out of your Two Year warranty, please register your product within 30 days at www.sportdog.com. By registering and keeping your receipt you will enjoy the product's full warranty and, should you ever need to call the Customer Care Center, we will be able to help you faster. Most importantly, your valuable information will never be given or sold to anyone. Complete warranty information is available online at www.sportdog.com.

OTHER IMPORTANT INFORMATION

Use of this product implies acceptance of any and all terms, conditions, and notices related to this product including, but not limited to, those found in this Operating Guide and the Insert containing important Regulatory Compliance and Safety information.

TABLE OF CONTENTS

COMPONENTS	3
HOW THE SYSTEM WORKS.....	3
KEY DEFINITIONS.....	4
PREPARE THE REMOTE TRANSMITTER	5
PREPARE THE COLLAR RECEIVER	6
FIT THE COLLAR RECEIVER	8
FIND THE BEST INTENSITY LEVEL FOR YOUR DOG	9
CHANGE STATIC STIMULATION RANGES	9
GENERAL TRAINING TIPS.....	10
PROGRAM THE REMOTE TRANSMITTER	10
MATCH THE COLLAR RECEIVER AND REMOTE TRANSMITTER.....	11
ADD A COLLAR RECEIVER FOR MULTI-DOG OPERATION	11
CHANGE ID CODES.....	12
ACCESSORIES	12
FREQUENTLY ASKED QUESTIONS	13
TROUBLESHOOTING	14
TEST LIGHT TOOL INSTRUCTIONS.....	14
BATTERY DISPOSAL	15

You  videos available at www.youtube.com/sportdogbrand or on each products' VIDEOS tab at sportdog.com.

COMPONENTS



HOW THE SYSTEM WORKS

The SportDOG® SportTrainer™ 575 Remote Trainer has been proven safe, comfortable, and effective for all dogs over 8 lbs. Consistent, correct use of this product allows you to reinforce commands and correct misbehavior from up to 500 yards. The Remote Transmitter sends a signal, activating the Collar Receiver to deliver a harmless stimulation. With proper training, a dog will learn to associate this signal with a command. Like all SportDOG products, this model features adjustable static stimulation levels so you can tailor the stimulation level to your dog's temperament, eliminating the risk of over-stimulation.

IMPORTANT: THE SPORTTRAINER 575 REMOTE TRAINER HAS A RANGE OF UP TO 500 YARDS. DEPENDING ON THE WAY YOU HOLD THE REMOTE TRANSMITTER, THE MAXIMUM RANGE MAY VARY. FOR CONSISTENT RESULTS AT LONGER RANGES, HOLD THE REMOTE TRANSMITTER IN A VERTICAL POSITION AWAY FROM YOUR BODY AND ABOVE YOUR HEAD. TERRAIN, WEATHER, VEGETATION, TRANSMISSION FROM OTHER RADIO DEVICES, AND OTHER FACTORS WILL AFFECT THE MAXIMUM RANGE.



⚠ WARNING

Do not use this product if your dog is aggressive or if your dog is prone to aggressive behavior. Aggressive dogs can cause severe injury and even death to their owner and others. If you are unsure whether this product is appropriate for your dog, please consult your veterinarian or a certified trainer.

KEY DEFINITIONS

REMOTE TRANSMITTER: Transmits the radio signal to the Collar Receiver. It is waterproof and can be submerged in water to a depth of 25 ft.

INTENSITY BUTTONS: Allows you to adjust the level of static stimulation so you can match the stimulation to your dog's temperament.

DOG BUTTONS: Allows you to choose which dog should receive the stimulation.

LEFT BUTTON: This button is factory-set to deliver continuous static stimulation.

TOP RIGHT BUTTON: This button is factory-set to deliver tone stimulation.

BOTTOM RIGHT BUTTON: This button is factory-set to deliver vibration stimulation.

CHARGING JACK: For connecting the charger.

MODE BUTTON: This button gives you the ability to change the mode of your Remote Transmitter (see **STEP::05**).

COLLAR RECEIVER: Receives the radio signal from the Remote Transmitter and delivers the static, vibration, or tone stimulation for correcting or cueing your dog. It is waterproof and can be submerged in water to a depth of 25 ft.

RECEIVER INDICATOR LIGHT: Indicates when the Collar Receiver has been turned on or off, serves as a low-battery indicator, and also indicates when a continuous or momentary (nick) static stimulation button is pressed.

CONTACT POINTS: The contacts through which the Collar Receiver delivers static stimulation.

ON/OFF BUTTON: Momentarily pressing and releasing this button turns the Collar Receiver on and off.

THE COLLAR RECEIVER IS CAPABLE OF DELIVERING FOUR TYPES OF STIMULATION:

CONTINUOUS: You control both when and how long static stimulation is delivered, up to a maximum of 10 seconds. After 10 seconds, the Remote Transmitter will "time out" and static stimulation cannot be delivered to your dog for 5 seconds. After the 5 second "time-out" period, static stimulation can be delivered again.

MOMENTARY (NICK): Static stimulation is delivered for 1/10 of a second, regardless of how long the button is pressed.

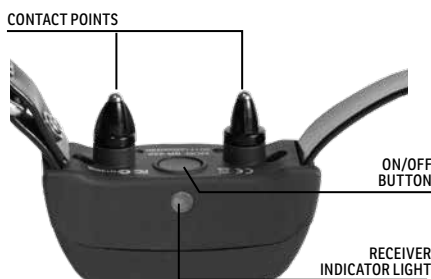
TONE: The Collar Receiver will make a rapid beeping noise when a Tone button is pressed.

VIBRATION (VIBE): The Collar Receiver will vibrate when a Vibration button is pressed, up to a maximum of 10 seconds. After 10 seconds, the Remote Transmitter will "time out" and vibration stimulation cannot be delivered to your dog for 5 seconds. After the 5 second "time-out" period, vibration stimulation can be delivered again.

REMOTE TRANSMITTER



COLLAR RECEIVER



STEP::01

PREPARE THE REMOTE TRANSMITTER

CHARGE THE REMOTE TRANSMITTER

1. Connect the corresponding charge connector to the Charging Jack.
2. Plug the charger into a standard wall outlet.
3. Charge the Remote Transmitter for 2 hours. It is not harmful to let the unit charge more than 2 hours.
4. When charging is complete, as indicated by the full battery icon, remove the charge connector.

Using Lithium-Ion technology, the Remote Transmitter only requires a 2 hour charge. It is not harmful to let the unit charge for more than 2 hours.

Note: Approximate battery life between charges is 20 to 40 hours, depending on frequency of use.



CHARGE CONNECTOR
PLACED IN THE
REMOTE TRANSMITTER
CHARGING JACK

ICON	FUNCTION
	Continuous Static Stimulation
	Momentary Static Stimulation
	Tone Only
	Vibration Only
	Dog Number

STEP::02

PREPARE THE COLLAR RECEIVER

CHARGE THE COLLAR RECEIVER

1. Lift the rubber cover protecting the Charging Jack.
2. Connect the corresponding charge connector to the Charging Jack.
3. Plug the charger into a standard wall outlet.
4. Charge the Collar Receiver for 2 hours. It is not harmful to let the unit charge more than 2 hours.
5. When charging is complete, as indicated by the Indicator Light flashing green, remove the charge connector and replace the rubber cover.

Using Lithium-Ion technology, the Collar Receiver only requires a 2 hour charge. It is not harmful to let the unit charge for more than 2 hours.

TO TURN THE COLLAR RECEIVER ON

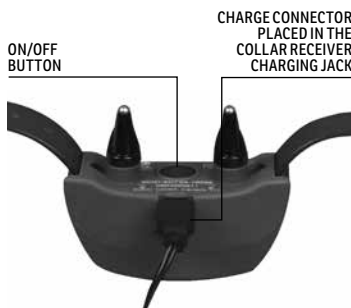
Press and release the On/Off Button. The Collar Receiver Indicator Light will come on solid green and the Collar Receiver will beep 1 - 2 times depending on what static stimulation range is chosen. The default is 2 (medium).

TO TURN THE COLLAR RECEIVER OFF

Press and release the On/Off Button. The Receiver Indicator Light comes on solid red and the Collar Receiver will beep for 2 seconds.

To extend the life between charging cycles, turn the Collar Receiver off when it is not in use.

NOTE: Approximate battery life between charges is 50 to 70 hours, depending on frequency of use.



RECHARGEABLE BATTERIES

⚠ WARNING

- Batteries should never be removed from the battery compartment for charging.
- Risk of explosion if batteries are charged in areas with high temperature (38° C / 100° F+).
- The rechargeable Lithium Ion (Li-Ion) batteries are not memory sensitive, do not require depletion before charging, and cannot be over charged.
- The batteries come partially charged from the factory, but will require a full charge before the first use.
- **When storing the unit for long periods, remember to regularly give batteries a full charge. This should be done once every 3 to 4 months.**
- You should expect hundreds of recharge cycles from your batteries. However, all rechargeable batteries lose capacity over time relative to the number of recharge cycles they experience. This is normal. If your operating time drops to half of the original life, contact the Customer Care Center to purchase a new battery.
- The batteries should last for a period of 3-5 years. When a battery needs replacement, you can order a new pack by calling our Customer Care Center. Please do not open the Collar Receiver or Remote Transmitter until you have received the replacement.

RECEIVER INDICATOR LIGHT					
OPERATIONAL MODE	LIGHT COLOR	BATTERY STATUS	LIGHT FUNCTION	SPEAKER FUNCTION	VIBRATION
Unit is turned on via On/Off Button	Green	Good	Light is solid in color during beep sequence	Beeps 1-2 times depending on static stimulation range setting (2 is the default). Please see page 9.	N/A
Unit is turned on via On/Off Button	Red	Low	Light is solid in color during beep sequence		
Unit is turned off via On/Off Button	Red	N/A	Light is solid in color during beep sequence	Beeps continuously for 2 seconds	N/A
Unit is on	Green	Good	Light flashes every 2 seconds	N/A	N/A
Unit is on	Red	Low	Light flashes every 2 seconds	N/A	N/A
Unit is delivering continuous static stimulation	Red	N/A	Light is solid in color for as long as button is pressed (up to 10 seconds)	N/A	N/A
Unit is delivering momentary (nick) static stimulation	Red	N/A	Light will quickly flash once no matter how long button is pressed	N/A	N/A
Unit is delivering tone stimulation	Off	N/A	N/A	Unit will beep for as long as button is pressed	N/A
Unit is delivering vibration stimulation	Off	N/A	N/A	N/A	Unit will vibrate for as long as button is pressed (up to 10 seconds)
Unit is changing static stimulation range	Orange	N/A	Light flashes 1-2 times depending on desired static stimulation range	Beeps 1-2 times depending on static stimulation range setting (2 is the default). Please see page 9.	N/A
Unit is charging	Green	Low	Light is solid in color while charging	N/A	N/A
Unit is fully charged (charger still connected)	Green	Good	Light flashes once per second once the battery is completely charged	N/A	N/A

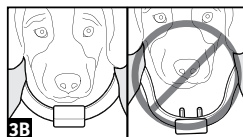
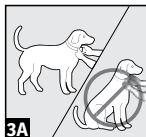
STEP::03

FIT THE COLLAR RECEIVER

IMPORTANT: THE PROPER FIT AND PLACEMENT OF THE COLLAR RECEIVER IS IMPORTANT FOR EFFECTIVE TRAINING. THE CONTACT POINTS MUST HAVE DIRECT CONTACT WITH YOUR DOG'S SKIN.

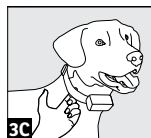
To ensure a proper fit, follow these steps:

1. With your dog standing (**3A**), center the Collar Receiver so the Contact Points are underneath your dog's neck, touching the skin (**3B**). If your dog has a long or thick coat, you have two options to ensure consistent contact: either trim the hair around the Contact Points or switch to the longer Contact Points included with your system.



CAUTION

- You should not make the collar any tighter than is required for good contact. A collar that is too tight will increase the risk of pressure necrosis in the contact area.
2. The Collar Receiver should fit snugly, yet loose enough to allow one finger to fit between the strap and your dog's neck (**3C**).
 3. Allow your dog to wear the collar for several minutes, and then recheck the fit. Check the fit again as your dog becomes more comfortable wearing the Collar Receiver.



STEP::04

FIND THE BEST INTENSITY LEVEL FOR YOUR DOG

The SportTrainer™ 575 Remote Trainer has multiple intensity levels. This allows you to choose the static stimulation that is best for your dog.

NOTE: Always start at the lowest level and work your way up.

For training efficiency, it is important to find the right intensity level for your dog. This is called the "Recognition Level", and is the level at which your dog looks around in curiosity or flicks his ears.

TO FIND YOUR DOG'S RECOGNITION LEVEL

NOTE: Every dog is different and you cannot predict where your dog's Recognition Level will be. Watch closely for any slight change in behavior that demonstrates your dog is feeling the static stimulation.

1. With the Collar Receiver turned on and properly fitted to your dog, use the Intensity Buttons (-/+) to set the display to Level 1. Press the Continuous Static Stimulation Button (Left Button) for 1 to 2 seconds.
2. If your dog shows no reaction to Level 1, go to Level 2 and repeat the process.
3. YOUR DOG SHOULD NOT VOCALIZE OR PANIC WHEN RECEIVING STATIC STIMULATION. IF THIS HAPPENS, THE STATIC STIMULATION LEVEL IS TOO HIGH AND YOU NEED TO GO BACK TO THE PREVIOUS LEVEL AND REPEAT THE PROCESS.
4. Once you find your dog's Recognition Level, this is the level you should use when you begin a training exercise.
5. If you have progressed to Level 10 while searching for your dog's Recognition Level and your dog continues to show no response, check to see if the Collar Receiver is snug against your dog's neck. Then go back to Intensity Level 1 and repeat the process. If your dog still does not indicate he is feeling the static stimulation, you have three options: trim the hair beneath the Contact Points, switch to the longer Contact Points included in your system, or change the static stimulation range (see below).

If after completing all of these steps your dog still does not indicate he is feeling the static stimulation, please contact the Customer Care Center.

CHANGE STIMULATION RANGES

The SportTrainer 575 Collar Receiver has 2 static stimulation ranges (**Low and Medium**). There are 10 static stimulation levels within each range, with 1 being the lowest and 10 being the highest. The default range setting is 2 (medium).

To change the range of static stimulation, follow these steps:

1. Make sure the Collar Receiver is off.
2. Turn the unit on by pressing and releasing the On/Off Button.
3. Within 5 seconds of the Indicator Light turning off, press and hold the On/Off Button for 3 seconds.
4. The Collar Receiver will then beep once and the Indicator Light will flash orange. This indicates **Low** static stimulation range. If **Medium** is desired, continue to hold the On/Off Button until the number of beeps/orange flashes equals 2 as shown in the chart below.
5. Release the On/Off Button once the desired range is selected; the Collar Receiver will turn off.
6. Turn the unit back on. It will then beep according to the static stimulation range selected in Step 4.

NUMBER OF BEEPS	STATIC STIMULATION RANGE	DOG TEMPERAMENT
1 Beep	Low	Mild
2 Beeps	Medium	Moderate

GENERAL TRAINING TIPS

BEFORE TRAINING YOUR DOG WITH THIS PRODUCT

You will have the most success using this Remote Trainer if you always remember to teach a command before trying to reinforce the command with the Remote Trainer. Always keep the following training tips in mind:

- Eliminate one misbehavior or teach one obedience command at a time. If you move too fast with the training, your dog may become confused.
- Be consistent. Give your dog a static, tone, or vibration stimulation with each misbehavior.
- Do not over-stimulate your dog. Use as few stimulations as possible to train your dog.
- Restrict your dog from situations in which he has a history of misbehaving unless you can supervise him and use the Remote Trainer for applying static, tone, or vibration stimulation.
- If you notice one situation in which your dog misbehaves repeatedly, set up this situation as a training session. This will dramatically increase your chances of success.
- If your dog has a timid reaction to the static, tone, or vibration stimulation (especially the first couple of times), do not be alarmed. Redirect his attention to a simple and appropriate behavior (i.e. a known command, such as "Sit").
- Never use the Remote Trainer to correct or eliminate any form of aggressive behavior. If your dog exhibits such behavior, contact a professional trainer. Aggression in dogs is the result of many factors. It may be a learned behavior or it may be brought on as a result of fear. Another factor contributing to aggression in dogs is social dominance. Every dog is different.

Visit our website at www.sportdog.com to find more detailed training tips and guides, or contact our Customer Care Center for further assistance.

At this point, your Remote Trainer is ready to use. The Remote Transmitter is factory set to Mode 1, but you may wish to change the mode to fit your situation. See **STEP::05** for an explanation of mode options.

STEP::05

PROGRAM THE REMOTE TRANSMITTER

The SportTrainer™ 575 Remote Transmitter has two operational modes allowing you to select the best match for your type or style of training. *NOTE: The Remote Transmitter is factory set to Mode 1.*

TO CHANGE THE MODE:

1. Refer to the table below to review the available modes.
2. Using the Intensity Buttons (-/+), set the display to 1.
3. Turn the Remote Transmitter over and remove the belt clip (if attached). Using a pen or the tine of a buckle, depress and release the Mode Button.
4. Using the Intensity Buttons (-/+), set to Mode 1 or 2. After 5 seconds, your selected mode will flash to indicate that it has been set.



MODE #	LEFT BUTTON	TOP RIGHT BUTTON	BOTTOM RIGHT BUTTON
1	Continuous*	Tone Only	Vibration Only
2	Momentary*	Tone Only	Vibration Only

* Static stimulation level adjusted by Intensity Buttons (-/+).

CONTINUOUS: You control both when and how long static stimulation is delivered, up to a maximum of 10 seconds. After 10 seconds, the Remote Transmitter will "time out" and static stimulation cannot be delivered to your dog for 5 seconds. After the 5 second "time-out" period, static stimulation can be delivered again.

MOMENTARY: Static stimulation is delivered for 1/10 of a second, regardless of how long the button is pressed.

STEP::06

MATCH THE COLLAR RECEIVER AND REMOTE TRANSMITTER

The Remote Transmitter has been pre-configured to work with the Collar Receiver. However, if you need to match the Collar Receiver to work with a new Remote Transmitter, or to match a new Collar Receiver to work with your existing Remote Transmitter, follow these steps:

1. Turn the Collar Receiver off.
2. Press and hold the On/Off Button. The Receiver Indicator Light will come on and then turn off after 5 seconds.
NOTE: If the Receiver Indicator Light begins flashing, start over from Step 1.
3. Release the On/Off Button.
4. Press and hold one of the Side Buttons on the Remote Transmitter until the Receiver Indicator Light flashes 5 times.
5. Once the Receiver Indicator Light has flashed 5 times, the Collar Receiver has been matched and will begin flashing as normal. If the Receiver Indicator Light does not flash, repeat this procedure.

STEP::07

ADD A COLLAR RECEIVER FOR MULTI-DOG OPERATION

A SportDOG® Add-A-Dog® extra Collar Receiver must be purchased to train additional dogs.

To add a Collar Receiver for multi-dog training, follow these steps:

1. Program the Remote Transmitter for multi-dog operation:
 - A. Using the Intensity Buttons (-/+), set the display to 2.
 - B. Turn the Remote Transmitter over and remove the belt clip (if attached). Using a pen or the tine of a buckle, depress and release the Mode Button.
 - C. Using the Dog Buttons (1/2), select Dog 2. After 5 seconds the icon will blink confirming selection.
2. Program the second Collar Receiver (**make sure Dog 2 is selected on the Remote Transmitter**):
 - A. Turn the Collar Receiver off.
 - B. Press and hold the On/Off Button. The Receiver Indicator Light will come on, then turn off after 4-5 seconds. If the On/Off Button is released too early, the Receiver Indicator Light will begin its normal flashing. If this occurs, start over from A.
 - C. After the Receiver Indicator Light has turned off, release the On/Off Button.
 - D. Press and hold the Left Side Button on the Remote Transmitter until the Receiver Indicator Light flashes 5 times. If the Receiver Indicator Light does not flash 5 times, start over from A.

STEP::08

CHANGE ID CODES

An ID Code is the signal identification between the Remote Transmitter and Collar Receiver. Each is programmed in 1 of 2,000 ID Codes from the factory. The SportTrainer™ 575 has the flexibility to program two or more Remote Transmitters to the same ID Code, allowing them to both control one Collar Receiver. There are 64 programmable ID Codes available.

TO MANUALLY PROGRAM A REMOTE TRANSMITTER'S ID CODE

1. Using the Intensity Buttons (-/+), set the display to 3.
2. Turn the Remote Transmitter over and remove the belt clip (if attached). Using a pen or tine of a buckle, depress and release the Mode Button.
3. Select the new ID Code using the Intensity Buttons (-/+) to pick a number ID 1-64. After 3-5 seconds, your selected code will flash to indicate it has been set.

TO RETURN THE REMOTE TRANSMITTER TO FACTORY ID CODE

1. Using the Intensity Buttons (-/+), set the display to 3.
2. Turn the Remote Transmitter over and remove the belt clip (if attached). Using a pen or tine of a buckle, depress and release the Mode Button.
3. Use the Intensity Buttons (-/+) to select dashes "--". After 3-5 seconds, the display will flash to indicate the Remote Transmitter has been reset to the Factory ID.

ACCESSORIES

To purchase additional accessories for your SportDOG Brand® product, visit our website at www.sportdog.com, contact the Customer Care Center at 1-800-732-0144, or visit a retailer near you.

FREQUENTLY ASKED QUESTIONS

Is the static stimulation safe for my dog?	While Continuous and/or Momentary static stimulation may be unpleasant, it is harmless to your dog. Electronic training devices require interaction and training from the owner to achieve desired results.
How old does a dog have to be before using the Remote Trainer?	Your dog should be able to learn basic obedience commands such as "Sit" or "Stay". The system should only be used with dogs over 6 months of age. The Collar Receiver may be too large for dogs under 8 lbs. If your dog is injured or its mobility is otherwise impaired, contact your veterinarian or professional trainer before use.
Once my dog is trained and has been obeying my commands, will my dog have to continue to wear the Collar Receiver?	Your dog may need to wear the Collar Receiver from time to time for reinforcement. Also, many hunters keep the Collar Receiver on their dogs while hunting for maximum control.
Is the Collar Receiver waterproof?	Yes. If the rechargeable battery pack ever needs to be replaced, make sure the o-ring and o-ring groove are free from dirt and debris.
Can my Collar Receiver be used around salt water?	Yes. However, if the Collar Receiver is used in or around salt water, it should be rinsed with fresh water following each use.
Can I use the Remote Trainer with more than one dog?	Yes. The SportTrainer™ 575 Remote Trainer is expandable to a maximum of 2 dogs. A SportDOG® Add-A-Dog® Collar Receiver must be purchased.
Can I use the Remote Trainer on aggressive dogs?	We do not recommend any of our products to be used on aggressive dogs. We recommend you contact your local veterinarian or professional trainer to determine if your dog might be aggressive.
Will I get exactly 500 yards of range with the Remote Trainer?	The range you get with your Remote Trainer will vary according to terrain, weather, and vegetation as well as transmission from other radio devices. To get the maximum amount of range, please refer to the "HOW THE SYSTEM WORKS" section of this guide.
How long can I continuously deliver stimulation to my dog?	The maximum amount of time you can press the Continuous Static Stimulation Button and deliver static stimulation to your dog is 10 seconds. The maximum amount of time you can press the vibration button and deliver vibration stimulation is 10 seconds. After 10 seconds, the Remote Transmitter will "time-out" for 5 seconds and the button must be released and pressed again. Tone stimulation will be delivered as long as a Tone button is pressed.
What do I do if my dog's neck becomes red and irritated?	This condition is due to the Contact Points irritating the skin. Discontinue use of the Collar Receiver for a few days. If the condition persists beyond 48 hours, see your veterinarian. Once the skin returns to normal, resume use and monitor the skin condition closely.
Can I attach a leash/lead to the Collar Receiver?	DO NOT attach a leash/lead to the Collar Receiver. You may put a separate non-metallic collar on your dog's neck and attach a leash/lead. Be sure the extra collar does not interfere with the Contact Points.
Can I program my SportTrainer 575 Remote Trainer to work with my other SportDOG® Brand systems?	Yes. However, it is not backwards compatible with older SportDOG® Brand systems because it operates at a different frequency.
My Remote Transmitter is sending a signal to more than one Collar Receiver unintentionally, what should I do?	In the rare event this occurs, you can change your Remote Transmitter's ID Code, see the "CHANGE ID CODES" section for assistance.

TROUBLESHOOTING

The answers to these questions should help you solve any problem you have with this system. If more assistance is needed, please contact the Customer Care Center or visit our website at www.sportdog.com.

My dog is not responding when I press a button.	<ul style="list-style-type: none">• Check to see if the Collar Receiver has been turned on and the Indicator Light is flashing.• If your range has reduced from the first time you used it, please check to see if the battery is low in either the Remote Transmitter or Collar Receiver.• Many factors can impact the range you have with the Remote Trainer. For a list of these factors, please refer to "HOW THE SYSTEM WORKS".• You can verify the Collar Receiver is delivering static stimulation to your dog by placing the Test Light Tool, enclosed in your kit, on the Collar Receiver. Please refer to the "TEST LIGHT TOOL INSTRUCTIONS" below for details.• Increase the Intensity. Refer to "FIND THE BEST INTENSITY LEVEL FOR YOUR DOG" for more information.• Increase the Static Stimulation Range. Refer to "CHANGE STATIC STIMULATION RANGES" for more information.• Make sure the Collar Receiver's Contact Points are placed snugly against your dog's skin. Refer to "FIT THE COLLAR RECEIVER" for more information.• You may need to switch to the longer Contact Points included with your system or trim the hair beneath the Contact Points.• If you notice your operating time is significantly reduced from the original time, your Collar Receiver battery needs to be replaced. Contact the Customer Care Center to purchase a new one.
The Collar Receiver will not turn on.	<ul style="list-style-type: none">• Make sure the Collar Receiver has been charged. The Collar Receiver will charge in 2 hours.
The Collar Receiver is not responding to the Remote Transmitter.	<ul style="list-style-type: none">• Make sure the Remote Transmitter has been charged. The Remote Transmitter will charge in 2 hours.• Verify the Collar Receiver has been turned on and the Indicator Light is flashing. Refer to "TO TURN THE COLLAR RECEIVER ON".• Refer to "MATCH THE COLLAR RECEIVER AND REMOTE TRANSMITTER".

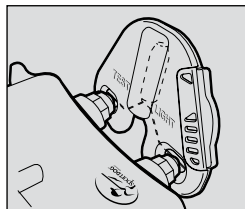
TEST LIGHT TOOL INSTRUCTIONS

1. Turn the Collar Receiver on.
2. Hold the Test Light Tool contacts to the Contact Points.
3. Press a Static Stimulation Button on the Remote Transmitter.
4. The Test Light will flash.
NOTE: At higher Static Stimulation Levels, the Test Light will flash brighter.

5. Turn the Collar Receiver off.

Save the Test Light Tool for future testing.

NOTE: If the Test Light does not flash, recharge the battery and re-test. If the Test Light still does not flash, contact the Customer Care Center.





BATTERY DISPOSAL

This system operates on two Li-Ion battery packs (160mAh capacity for the Collar Receiver, 500mAh capacity for the Remote Transmitter). Only replace with battery received from calling the Customer Care Center.

Please see below for instructions on how to remove the battery from the product for separate disposal.

AT END OF PRODUCT LIFE, USE THESE BATTERY REMOVAL INSTRUCTIONS FOR FINAL DISPOSAL (DO NOT OPEN THE COLLAR RECEIVER OR REMOTE TRANSMITTER UNTIL YOU HAVE RECEIVED THE REPLACEMENT).

- Using a T8 Torx screwdriver, remove the case screws from your Remote Transmitter.
- Using a 3/32 Hex Key, remove the case screws from your Collar Receiver.
- Remove the case back or cover.
- Remove the old battery pack.

⚠ WARNING

- When removing the old battery pack, care must be taken when gripping the connector firmly to avoid damaging the wires. Shorting the battery wires may cause fire or explosion.
- These instructions are not valid for repair or battery replacement. Replacing the battery with a battery not specifically approved by Radio Systems Corporation® may cause fire or explosion. Please call the Customer Care Center to avoid invalidating your warranty.



**GEAR THE WAY
YOU'D DESIGN IT[®]**

SPORTDOG.COM

©2019 RADIO SYSTEMS CORPORATION
Radio Systems Corporation • 10427 PetSafe Way • Knoxville, TN 37932 • 1.800.732.0144
L400-2441