



SDF::R

OPERATING GUIDE
PLEASE READ THIS ENTIRE GUIDE BEFORE BEGINNING

IMPORTANT SAFETY INFORMATION

Explanation of Attention Words and Symbols used in this guide



This is the safety alert symbol. It is used to alert you to potential personal injury hazards. Obey all safety messages that follow this symbol to avoid possible injury or death.

⚠️ WARNING

WARNING indicates a hazardous situation which, if not avoided, could result in death or serious injury.

CAUTION

CAUTION, used without the safety alert symbol, indicates a hazardous situation which, if not avoided, could result in harm to your dog.

⚠️ WARNING

- Not for use with aggressive dogs. Do not use this product if your dog is aggressive, or if your dog is prone to aggressive behavior. Aggressive dogs can cause severe injury and even death to their owner and others. If you are unsure whether this product is appropriate for your dog, please consult your veterinarian or a certified trainer.
- This device contains Lithium-Ion (Li-Ion) batteries; never incinerate, puncture, deform, short-circuit, or charge with an inappropriate charger. Fire, explosion, property damage, or bodily harm may occur if this warning is not followed.
- Risk of explosion if battery is replaced by an incorrect type. Dispose of used batteries according to the instructions.

CAUTION

Please read and follow the instructions in this manual. Proper fit of the collar is important. A collar worn for too long, or made too tight on the dog's neck may cause skin damage. This is called bed sores; it is also called decubitus ulcers or pressure necrosis.

- Avoid leaving the collar on the dog for more than 12 hours per day.
- When possible, reposition the collar on the dog's neck every 1 to 2 hours.
- Check the fit to prevent excessive pressure; follow the instructions in this manual.
- Never connect a lead to the electronic collar; it will cause excessive pressure on the contacts.
- When using a separate collar for a lead, don't put pressure on the electronic collar.
- Wash the dog's neck area and the contacts of the collar weekly with a damp cloth.
- Examine the contact area daily for signs of a rash or a sore.
- If a rash or sore is found, discontinue use of the collar until the skin has healed.
- If the condition persists beyond 48 hours, see your veterinarian.

For additional information on bed sores and pressure necrosis, please visit the FAQ section for remote trainers at www.sportdog.com.

These steps will help keep your dog safe and comfortable. Millions of dogs are comfortable while they wear stainless steel contacts. Some dogs are sensitive to contact pressure. You may find after some time that your dog is very tolerant of the collar. If so, you may relax some of these precautions. It is important to continue daily checks of the contact area. If redness or sores are found, discontinue use until the skin has fully healed.

- You may need to trim the hair in the area of the contact points or switch to the longer contact points to ensure consistent contact. Never shave the dog's neck; this may lead to a rash or infection.
- You should not make the collar any more tight than is required for good contact. A collar that is too tight will increase the risk of pressure necrosis in the contact area.

Thank you for choosing SportDOG Brand®. Used properly, this product will help you train your dog efficiently and safely. To ensure your satisfaction, please review this owner's manual thoroughly. If you have questions regarding this product's operation, please see this manual's Frequently Asked Questions or Troubleshooting section, contact our Customer Care Center at 1-800-732-0144, or visit our website at www.sportdog.com.

Please register your product within 90 days at www.sportdog.com. By registering, you will enjoy the product's full warranty and should you ever need to call the Customer Care Center, we will be able to help you faster. Additionally, you will not have to save your product receipt as registering serves as proof of purchase. Most importantly, SportDOG™ will never give or sell your valuable information to anyone.

SportDOG BRAND® PRODUCT WARRANTY INFORMATION

All parts are covered under warranty for the life of the product. Labor is covered for the first year of ownership. Thereafter, there is a minimum service charge for the repair or replacement of the product. Misuse, loss, damage by pet, or improper handling is not covered. SportDOG™ will not pay for loss of time, inconvenience, loss of use of your product, or any incidental or consequential damages. Warranty voided if product is resold or purchased from an online auction site.

TABLE OF CONTENTS

COMPONENTS	5
PREPARE THE COLLAR RECEIVER	6
FIND THE BEST INTENSITY LEVEL FOR YOUR DOG	6
FIT THE COLLAR RECEIVER	8
TAKING YOUR PET OUT OF THE PET AREA	9
TROUBLESHOOTING	10
TEST LIGHT INSTRUCTIONS	11
TERMS OF USE AND LIMITATION OF LIABILITY	12

COMPONENTS



STEP :: 01

PREPARE THE COLLAR RECEIVER

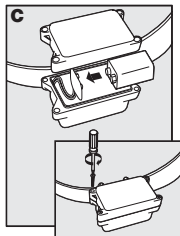
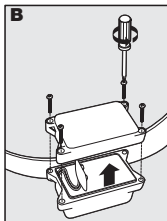
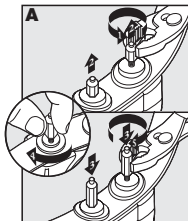
Your Collar Receiver comes with short Contact Points installed. Use the long Contact Points for pets with long or thick hair. Tighten the Contact Points with pliers one-half turn beyond finger tight (A). Check the tightness weekly.

To Insert and Remove the Battery

Note: Do not install the battery while the Collar Receiver is on your pet.

1. Remove the screws with a Philips screwdriver.
2. Remove the Battery Lid (B).
3. Install a 9-volt alkaline battery (C).
4. Replace the Battery Lid (C).
5. Reinstall the screws. Do not over-tighten the screws.

Replacement 9-volt alkaline batteries can be found at many retailers.

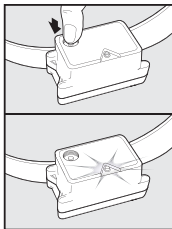
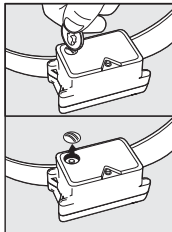


STEP :: 02

FIND THE BEST INTENSITY LEVEL FOR YOUR DOG

Read all steps before attempting to set the Correction Level.

1. Remove the clear plastic cover with a coin to expose the Correction Level Button.
2. With the battery installed, press the Correction Level Button and release when the Receiver LED Indicator Light lights up.
3. The Receiver LED Indicator Light will emit a series of flashes representing the Correction Level.
4. Increase the Correction Level by pressing and releasing the Correction Level Button within 5 seconds of the previous series of flashes.
5. After setting the Correction Level, replace the cover to protect the Correction Level Button.



The Correction Levels increase in strength from 1 to 5. Pushing the Correction Level Button while the Collar Receiver is on level 5 will cause the Collar Receiver to revert to level 1. Refer to the Function and Response Table to choose the Correction Level that best fits your pet.

The Collar Receiver is equipped to automatically increase the level of Static Correction the longer your pet remains in the Static Correction Zone if the collar is set at level 2 or above.

The Receiver LED Indicator Light acts as a low battery indicator, flashing every 4 to 5 seconds when replacement is required.

FUNCTION AND RESPONSE TABLE

Indicator Light Response	Correction Level	Collar Receiver Function	Temperament of Pet
1 Flash	1	Beep and Vibrate (No Static Correction)	
2 Flashes	2	Low Static Correction	Timid
3 Flashes	3	Medium Static Correction	Timid or Average
4 Flashes	4	Medium High Static Correction	Average or High Energy
5 Flashes	5	High Static Correction	High Energy
Flashes once every 4 to 5 seconds		Low Battery	

Note: Begin training with Correction Level 2 and only increase if your pet does not respond to the Static Correction.

FIT THE COLLAR RECEIVER

IMPORTANT: The proper fit and placement of your Collar Receiver is important for effective training. The Contact Points must have direct contact with your pet's skin on the underside of his neck.

To assure a proper fit, please follow these steps:

1. Make sure that the battery is not installed in the Collar Receiver.
2. Start with your pet standing comfortably.
3. Center the Contact Points underneath your pet's neck, touching the skin. If your pet has a long or thick coat, use the enclosed long Contact Points to reach through the hair.
Note: It is sometimes necessary to trim the hair around the Contact Points to make sure that contact is consistent.
4. Check the tightness of the Collar Receiver by inserting one finger between the end of a Contact Point and your pet's neck. The fit should be snug but not constricting.
5. Allow your pet to wear the collar for several minutes then recheck the fit. Check the fit again as your pet becomes more comfortable with the Collar Receiver.

CARE AND CLEANING

To ensure the effectiveness of this product and the comfort and safety of your dog, check the fit of his collar frequently. If you notice that your dog is experiencing skin irritation, discontinue use of the collar for a few days. If the condition persists beyond 48 hours, see your veterinarian.

To prevent skin irritation from occurring:

- The Collar Receiver should not be worn for more than 8 hours out of every 24-hour period.
- Your dog's neck and the Contact Points must be washed weekly with a washcloth and mild hand soap, then rinsed thoroughly.

TAKING YOUR PET OUT OF THE PET AREA

IMPORTANT: Remove the Collar Receiver and leave it in the Pet Area.

Once your pet learns the Boundary Zone, he will be reluctant to cross it for walks or car rides.

Option 1: Replace the Collar Receiver with a regular collar. Put your pet in a car that is within the Pet Area and drive him out of the Pet Area.

Option 2: Replace the Collar Receiver with a regular collar and leash. Walk your pet out of the Pet Area while giving a command such as "OK" at a specific place of the Boundary Zone (the end of your driveway, sidewalk, etc.). Always leave the Pet Area with a leash at this place and your pet will associate leaving the Pet Area only on a leash, only at this place, and only with a person. You may initially need to convince your pet to leave the Pet Area with a food treat and lots of praise.

Note: You may also carry your pet out of the Pet Area.



TROUBLESHOOTING

Collar Receiver is not beeping or correcting.	<ul style="list-style-type: none">• Check battery to make sure it is installed properly.• Check that both lights are lit on the Fence Transmitter. If not, perform the “Short Loop Test” (refer to your SportDOG Brand™ In-Ground Fence Operating and Training Guide).
The Collar Receiver is beeping, but the pet is not responding to the Static Correction.	<ul style="list-style-type: none">• Make sure the Static Correction Level is set at 2 or above.• Test the Collar Receiver with the Test Light.• If the Test Light flashes, check the fit of the Collar Receiver.• Trim your pet’s fur where the Contact Points touch the neck and/or switch to the longer Contact Points.• Increase the Static Correction Level.• Repeat training steps to reinforce training.
The Collar Receiver has to be held on top of the Boundary Wire to activate.	<ul style="list-style-type: none">• Replace battery.• Adjust Range Adjuster knob clockwise to increase the distance from the Boundary Wire that the Collar Receiver activates.• Adjust the Boundary Control Switch to the other setting.• If using a Double Loop, make sure Boundary Wires are separated 3 to 5 feet.• If the Collar Receiver still has to be held on top of the Boundary Wire, perform the “Short Loop Test.”

TROUBLESHOOTING (continued)

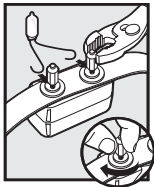
The Collar Receiver activates inside the house.

- Turn the Range Adjuster knob counterclockwise to decrease the distance from the Boundary Wire that the Collar Receiver activates.
- Make sure the Boundary Wire is not running too close to the house. The signal can transmit through the walls of your house.
- Make sure Boundary Wires are twisted from Boundary to the Fence Transmitter.

TEST LIGHT INSTRUCTIONS

IMPORTANT: Remove Test Light before placing Receiver Collar on your pet.

1. Set Receiver Collar to Static Correction Level 5.
2. Remove the battery.
3. Loosen the Contact Points with pliers.
4. Bend the leads around the base of each Contact Point.
5. Hand tighten the Contact Points, making sure that the leads stay in contact with the bases of the Contact Points.
6. Replace the battery.
7. The Test Light will flash in the Boundary Zone if the Receiver Collar is working properly.
8. Remove the Test Light and tighten the Contact Points with pliers one-half turn beyond finger tight. Save the Test Light for future testing.



Note: If the Test Light does not flash, install a new battery and re-test. If Test Light still does not flash, contact the Customer Care Center at 1-800-732-2677.

TERMS OF USE AND LIMITATION OF LIABILITY

1. Terms of Use

This Product is offered to you conditioned upon your acceptance without modification of the terms, conditions and notices contained herein. Usage of this Product implies acceptance of all such terms, conditions, and notices.

2. Proper Use

This Product is designed for use with dogs where training is desired. The specific temperament of your dog may not work with this Product. We recommend that you not use this Product if your dog is less than 8 pounds or if your dog is aggressive. If you are unsure whether this is appropriate for your dog, please consult your veterinarian, certified trainer or contact our Customer Care Center at 1-800-732-0144.

Proper use includes reviewing the entire Operating and Training Guide provided with your Product and any specific Caution statements.

3. No Unlawful or Prohibited Use

This Product is designed for use with dogs only. This dog training device is not intended to harm, injure, or provoke. Using this Product in a way that is not intended could result in violation of Federal, State or local laws.

4. Limitation of Liability

In no event shall Radio Systems® Corporation be liable for any direct, indirect, punitive, incidental, special or consequential damages, or any damages whatsoever arising out of or connected with the use or misuse of this Product. Buyer assumes all risks and liability from the use of this Product.

5. Modification of Terms and Conditions

Radio Systems Corporation reserves the right to change the terms, conditions and notices under which this Product is offered.

FCC COMPLIANCE

This equipment has been tested and found to comply with the limits for a Class B digital device, pursuant to part 15 of the FCC Rules. These limits are designed to provide reasonable protection against harmful interference in a residential installation. This equipment generates, uses and can radiate radio frequency energy and, if not installed and used in accordance with the instructions, may cause harmful interference to radio communications. However, there is no guarantee that interference will not occur in a specific installation. If interference does occur to radio or television reception, which can be determined by turning the equipment off and on, the user is encouraged to try to correct the interference by one or more of the following measures:

- Reorient or relocate the receiving antenna.
- Increase the separation between the equipment and the receiver.
- Connect the equipment to an outlet on a circuit different from that to which the receiver is connected.
- Contact customer service at 1-800-732-0144 or an experienced radio/TV technician for assistance.

CAUTION: Unauthorized changes or modifications to the equipment, not approved by Radio Systems® Corporation, could result in not meeting compliance with FCC regulations and could void the user's authority to operate the equipment.



This device complies with part 15 of the FCC Rules. Operation is subject to the following two conditions: (1) This device may not cause harmful interference, and (2) this device must accept any interference received, including interference that may cause undesired operation.

PERCHLORATE BATTERY

Perchlorate Material – special handling may apply.

See www.dtsc.ca.gov/hazardouswaste/perchlorate.



BATTERY DISPOSAL

Separate collection of spent batteries is required in many regions; check the regulations in your area before discarding spent batteries.

SPORTDOG.COM



SPORTDOG / ADD-A-DOG®
Collar Receiver

SDR::A ADD-A-DOG®



NOTE: SDR-FS, SDR-FH, SDR, SDR-CH, SDR-FC, SDR-BEEP AND SDR-H
ADD-A-DOG COLLARS ARE NOT COMPATIBLE WITH THIS SYSTEM.

OTHER COMPATIBLE COLLARS INCLUDE: SDR-AH & SDR-AW ADD-A-DOG®

©2011 RADIO SYSTEMS® CORPORATION

Radio Systems® Corporation • 10427 PetSafe Way • Knoxville, TN 37932 • 1-800-732-0144
400-711/1