



PRO
HUNTER®

2525

OPERATING GUIDE
PLEASE READ THIS ENTIRE GUIDE BEFORE BEGINNING

Hereinafter Radio Systems Corporation, Radio Systems PetSafe Europe Ltd., Radio Systems Australia Pty Ltd. and any other affiliate or Brand of Radio Systems Corporation may be referred to collectively as “We” or “Us”.

IMPORTANT SAFETY INFORMATION

Explanation of Attention Words and Symbols used in this guide



This is the safety alert symbol. It is used to alert you to potential personal injury hazards. Obey all safety messages that follow this symbol to avoid possible injury or death.

⚠️WARNING

WARNING indicates a hazardous situation which, if not avoided, could result in death or serious injury.

CAUTION

CAUTION, used without the safety alert symbol, indicates a hazardous situation which, if not avoided, could result in harm to your dog.

⚠️WARNING

- Not for use with aggressive dogs. Do not use this product if your dog is aggressive, or if your dog is prone to aggressive behavior. Aggressive dogs can cause severe injury and even death to their owner and others. If you are unsure whether this product is appropriate for your dog, please consult your veterinarian or a certified trainer.
- This device contains Lithium-Ion (Li-Ion) batteries; never incinerate, puncture, deform, short-circuit, or charge with an inappropriate charger. Fire, explosion, property damage, or bodily harm may occur if this warning is not followed.
- Risk of explosion if battery is replaced by an incorrect type. Dispose of used batteries according to the instructions.
- Batteries should never be removed from the battery compartment for charging.
- Risk of explosion if batteries are charged in areas with high temperature (100° F+ / 38° C+).

CAUTION

Please read and follow the instructions in this manual. Proper fit of the collar is important. A collar worn for too long, or made too tight on the dog’s neck may cause skin damage. This is called bed sores; it is also called decubitus ulcers or pressure necrosis.

- Avoid leaving the collar on the dog for more than 12 hours per day.
- When possible, reposition the collar on the dog’s neck every 1 to 2 hours.
- Check the fit to prevent excessive pressure; follow the instructions in this manual.
- Never connect a lead/leash to the electronic collar; it will cause excessive pressure on the contacts.
- When using a separate collar for a lead/leash, don’t put pressure on the electronic collar.
- Wash the dog’s neck area and the contacts of the collar weekly with a damp cloth.
- Examine the contact area daily for signs of a rash or a sore.
- If a rash or sore is found, discontinue use of the collar until the skin has healed.
- If the condition persists beyond 48 hours, see your veterinarian.

For additional information on bed sores and pressure necrosis, please visit the Support section for remote trainers at www.sportdog.com.

These steps will help keep your dog safe and comfortable. Millions of dogs are comfortable while they wear stainless steel contacts. Some dogs are sensitive to contact pressure. You may find after some time that your dog is very tolerant of the collar. If so, you may relax some of these precautions. It is important to continue daily checks of the contact area. If redness or sores are found, discontinue use until the skin has fully healed.

- You may need to trim the hair in the area of the Contact Points or switch to the longer Contact Points to ensure consistent contact. Never shave the dog’s neck; this may lead to a rash or infection.
- You should not make the collar any tighter than is required for good contact. A collar that is too tight will increase the risk of pressure necrosis in the contact area.
- Unauthorized changes or modifications to the equipment may violate FCC regulations and could void the user’s authority to operate the equipment.

Thank you for choosing SportDOG Brand® training products. Used properly, this product will help you train your dog efficiently and safely. To ensure your satisfaction, please review this owner’s manual thoroughly. If you have questions regarding this product’s operation, please see this manual’s Frequently Asked Questions or Troubleshooting sections, contact our Customer Care Center at 1-800-732-0144, visit our website at www.sportdog.com, or view our support videos at www.youtube.com/sportdogbrand.

To get the most protection out of your Two Year warranty, please register your product within 30 days at www.sportdog.com. By registering, and keeping your receipt you will enjoy the product’s full warranty and should you ever need to call the Customer Care Center, we will be able to help you faster. Most importantly, your valuable information will never be given or sold to anyone. Complete warranty information is available online at www.sportdog.com.

TABLE OF CONTENTS

COMPONENTS	5
HOW THE SYSTEM WORKS.....	5
KEY DEFINITIONS.....	6
PREPARE THE REMOTE TRANSMITTER.....	7
PREPARE THE COLLAR RECEIVER*	8
FIT THE COLLAR RECEIVER*	10
FIND THE BEST INTENSITY LEVEL FOR YOUR DOG.....	11
CHANGING STATIC STIMULATION RANGES*.....	12
GENERAL TRAINING TIPS	12
PROGRAM THE REMOTE TRANSMITTER*	13
MATCH THE COLLAR RECEIVER AND REMOTE TRANSMITTER.....	18
PROGRAM THE SYSTEM FOR TWO-DOG OPERATION	18
PROGRAM THE SYSTEM FOR THREE AND SIX-DOG OPERATION	19
CHANGE ID CODES*	20
ACCESSORIES	21
FREQUENTLY ASKED QUESTIONS.....	22
TROUBLESHOOTING	23
TEST LIGHT INSTRUCTIONS*	24
TERMS OF USE AND LIMITATION OF LIABILITY.....	24
FCC COMPLIANCE	25
BATTERY DISPOSAL.....	26
SPORTDOG® ADD-A-DOG® COLLAR RECEIVERS	28

* **You Tube** Videos available at www.youtube.com/sportdogbrand or on the VIDEOS tab of our website, sportdog.com, on the ProHunter® 2525 page.

COMPONENTS



HOW THE SYSTEM WORKS

The SportDOG® ProHunter® 2525 has been proven safe, comfortable, and effective for all dogs over 8 pounds. Consistent, correct use of this product allows you to reinforce commands and correct misbehavior from two miles. The Remote Transmitter sends a signal, activating the Collar Receiver to deliver a harmless stimulation. With proper training, a dog will learn to associate this signal with a command. Like all SportDOG products, this model features adjustable static stimulation levels so you can tailor the stimulation level to your dog’s temperament, eliminating the risk of over-correction.

IMPORTANT: THE PROHUNTER 2525 HAS A RANGE OF TWO MILES. DEPENDING ON THE WAY YOU HOLD THE REMOTE TRANSMITTER, THE MAXIMUM RANGE MAY VARY. FOR CONSISTENT RESULTS AT LONGER RANGES, HOLD THE REMOTE TRANSMITTER IN A VERTICAL POSITION AWAY FROM YOUR BODY AND ABOVE YOUR HEAD. TERRAIN, WEATHER, VEGETATION, TRANSMISSION FROM OTHER RADIO DEVICES, AND OTHER FACTORS WILL AFFECT THE MAXIMUM RANGE.



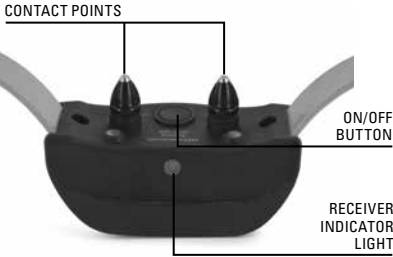
⚠️WARNING Do not use this product if your dog is aggressive, or if your dog is prone to aggressive behavior. Aggressive dogs can cause severe injury and even death to their owner and others. If you are unsure whether this product is appropriate for your dog, please consult your veterinarian or a certified trainer.

KEY DEFINITIONS

REMOTE TRANSMITTER



COLLAR RECEIVER



THE COLLAR RECEIVER IS CAPABLE OF DELIVERING FOUR TYPES OF STIMULATION:

CONTINUOUS: You control both when and how long static stimulation is delivered, up to a maximum of 10 seconds. After 10 seconds, the stimulation will “time out” and the Transmitter button needs to be released and then pressed again before additional static stimulation can be delivered.

MOMENTARY (NICK): Static stimulation is delivered for 1/10 of a second, regardless of how long the button is pressed.

TONE: The Collar Receiver will make a rapid beeping noise when a Tone button is pressed.*

VIBRATION: The Collar Receiver will vibrate when a Vibration button is pressed.*

*Tone and vibration come preset and are not adjustable

REMOTE TRANSMITTER: Transmits the radio signal to the Collar Receiver. It is waterproof and can be submerged in water to a depth of 25 feet.

INTENSITY DIAL: Provides multiple levels of static stimulation so you can match the correction to your dog’s temperament.

TRANSMITTER INDICATOR LIGHT: Indicates that a button is pressed and also serves as a low-battery indicator.

TOGGLE SWITCH: This switch is factory-set so that the Remote Transmitter can control two Collar Receivers.

TOP BUTTON: This button is factory-set to deliver tone without static stimulation.

MIDDLE BUTTON: This button is factory-set to deliver continuous MEDIUM stimulation.

BOTTOM BUTTON: This button is factory-set to deliver continuous LOW stimulation.

*NOTE: Pressing both the Middle and Bottom Buttons at the same time will deliver continuous HIGH stimulation (toggle switch set to the **up** position).*

CHARGING JACK: For connecting the charger. Although the Remote Transmitter is waterproof without it, keep the cover in place when not charging to keep debris out of the opening.

MODE BUTTON: This button gives you the ability to change the mode of your Remote Transmitter (see page 13).

COLLAR RECEIVER: Receives the radio signal from the Remote Transmitter and delivers the static, vibration, or tone stimulation for correcting or cueing your dog. It is waterproof and can be submerged in water to a depth of 25 feet.

RECEIVER INDICATOR LIGHT: Indicates when the Collar Receiver has been turned on or off, serves as a low-battery indicator, and also indicates when a continuous or momentary (nick) static stimulation button is pressed.

CONTACT POINTS: The contacts through which the Collar Receiver delivers static stimulation.

ON/OFF BUTTON: Momentarily pressing and releasing this button turns the Collar Receiver on and off.

STEP :: 01

PREPARE THE REMOTE TRANSMITTER

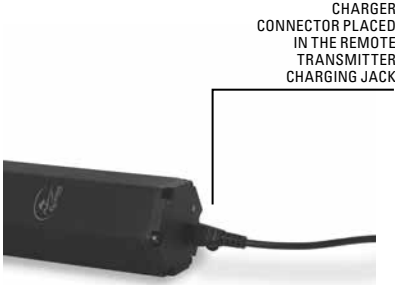
CHARGE THE REMOTE TRANSMITTER

1. Lift the rubber cover protecting the Charging Jack.
2. Connect one of the charger connectors to the Charging Jack.
3. Plug the charger into a standard 120/240-volt AC wall outlet.
4. Charge the Remote Transmitter for 2 hours for the first charge and every charge thereafter.

Using Li-Ion technology, the Remote Transmitter only requires a 2 hour charge. It is not harmful to let the unit charge for more than 2 hours.

5. When charging is complete, replace the rubber cover.

NOTE: Approximate battery life between charges is 40 to 60 hours, depending on frequency of use.



TRANSMITTER INDICATOR LIGHT

OPERATIONAL MODE	LIGHT COLOR	BATTERY STATUS	LIGHT FUNCTION
Continuous static, tone, or vibration stimulation button pressed	Green	Good	Light is solid in color while button is pressed
Continuous static, tone, or vibration stimulation button pressed	Red	Low	Light is solid in color while button is pressed
Momentary static stimulation button pressed	Green	Good	Light flashes once and turns off
Momentary static stimulation button pressed	Red	Low	Light flashes once and turns off
Unit is charging	Red	Low	Light is solid in color while on the charger
Unit is fully charged (charger still connected)	Green	Good	Light is solid in color once the battery is completely charged

PREPARE THE COLLAR RECEIVER

CHARGE THE COLLAR RECEIVER

1. Align the Contact Points with the Charging Cradle, making sure the hole on the Charging Cradle aligns with the Receiver Indicator Light.
2. Push the Charging Cradle up and back on the Collar Receiver, until the cradle snaps into place.
3. Plug the charger connector into the Charging Cradle.
4. Plug the charger into a standard 120/240-volt AC wall outlet.
5. Charge the Collar Receiver for 2 hours during the first charge, and every charge thereafter.

Using Li-Ion technology, the Collar Receiver only requires a 2 hour charge. It is not harmful to let the unit charge for more than 2 hours.

TO TURN THE COLLAR RECEIVER ON

Press and release the On/Off Button. The Collar Receiver Indicator Light will come on and the Collar Receiver will beep 1 - 3 times depending on what static stimulation range is chosen (page 12). The default is 2 (medium).

TO TURN THE COLLAR RECEIVER OFF

Press and release the On/Off Button when the Receiver Indicator Light comes on solid (red) and the Collar Receiver beeps for 2 seconds.

To extend the life between charging cycles, turn the Collar Receiver off when it is not in use.

NOTE: Approximate battery life between charges is 140 to 160 hours, depending on frequency of use.



RECEIVER INDICATOR LIGHT

OPERATIONAL MODE	LIGHT COLOR	BATTERY STATUS	LIGHT FUNCTION	SPEAKER FUNCTION	VIBRATION
Unit is turned on via On/Off Button	Green	Good	Light is solid in color during beep sequence	Beeps 1-3 times depending on static stimulation range setting (2 is the default setting). Please see page 12.	N/A
Unit is turned on via On/Off Button	Red	Low	Light is solid in color during beep sequence		
Unit is turned off via On/Off Button	Red	N/A	Light is solid in color during beep sequence	Beeps continuously for 2 seconds	N/A
Unit is on	Green	Good	Light flashes every 2 seconds	N/A	N/A
Unit is on	Red	Low	Light flashes every 2 seconds	N/A	N/A
Unit is delivering continuous static stimulation	Red	N/A	Light is solid in color for as long as button is pressed (up to 10 seconds)	N/A	N/A
Unit is delivering momentary static stimulation	Red	N/A	Light will quickly flash once no matter how long button is pressed	N/A	N/A
Unit is delivering tone stimulation	Off	N/A	N/A	Unit will beep for as long as button is pressed	N/A
Unit is delivering vibration stimulation	Off	N/A	N/A	N/A	Unit will vibrate for as long as button is pressed (up to 10 seconds)
Unit is charging	Green	Low	Light is solid in color while on the charger	N/A	N/A
Unit is fully charged (charger still connected)	Green	Good	Light flashes once per second once the battery is completely charged	N/A	N/A

RECHARGEABLE BATTERIES

⚠ WARNING

- This device contains Lithium-Ion (Li-Ion) batteries; never incinerate, puncture, deform, short-circuit, or charge with an inappropriate charger. Fire, explosion, property damage, or bodily harm may occur if this warning is not followed.
- Risk of explosion if battery is replaced by an incorrect type. Dispose of used batteries according to the instructions (see page 26).
- Batteries should never be removed from the battery compartment for charging.
- Risk of explosion if batteries are charged in areas with high temperature (100° F+ / 38° C+).
- The rechargeable Lithium Ion (Li-Ion) batteries are not memory sensitive, do not require depletion before charging, and cannot be over charged.
- The batteries come partially charged from the factory, but will require a full charge before the first use.

- **When storing the unit for long periods, remember to regularly give batteries a full charge. This should be done once every 3 to 4 months.**
- You should expect hundreds of recharge cycles from your batteries. However, all rechargeable batteries lose capacity over time relative to the number of recharge cycles they experience. This is normal. If your operating time drops to half of the original life, contact the Customer Care Center to purchase a new battery.
- The batteries should last for a period of 3-5 years. When a battery needs replacement, you can order a new pack by calling our Customer Care Center at 1-800-732-0144. Please do not open the Collar Receiver or Remote Transmitter until you have received the replacement.

STEP :: 03

FIT THE COLLAR RECEIVER

IMPORTANT: The proper fit and placement of the Collar Receiver is important for effective training. The Contact Points must have direct contact with your dog's skin.

CAUTION

Please read and follow the instructions in this manual. Proper fit of the collar is important. A collar worn for too long, or made too tight on the dog's neck may cause skin damage. This is called bed sores; it is also called decubitus ulcers or pressure necrosis.

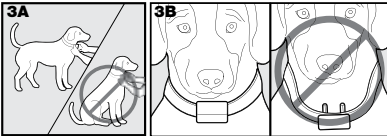
- Avoid leaving the collar on the dog for more than 12 hours per day.
- When possible reposition the collar on the dog's neck every 1 to 2 hours.
- Check the fit to prevent excessive pressure; follow the instructions in this manual.
- Never connect a lead/leash to the electronic collar; it will cause excessive pressure on the contacts.
- When using a separate collar for a lead/leash, don't put pressure on the electronic collar.
- Wash the dog's neck area and the contacts of the collar weekly with a damp cloth.
- Examine the contact area daily for signs of a rash or a sore.
- If a rash or sore is found, discontinue use of the collar until the skin has healed.
- If the condition persists beyond 48 hours, see your veterinarian.

For additional information on bed sores and pressure necrosis, please visit the Support section for remote trainers at www.sportdog.com.

These steps will help keep your dog safe and comfortable. Millions of dogs are comfortable while they wear stainless steel contacts. Some dogs are sensitive to contact pressure. You may find after some time that your dog is very tolerant of the collar. If so, you may relax some of these precautions. It is important to continue daily checks of the contact area. If redness or sores are found, discontinue use until the skin has fully healed.

To ensure a proper fit, follow these steps:

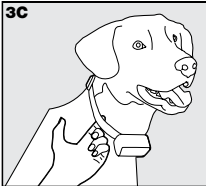
1. With your dog standing (3A), center the Collar Receiver so the Contact Points are underneath your dog's neck, touching the skin (3B). If your dog has a long or thick coat, you have two options to ensure consistent contact: either trim the hair around the Contact Points or switch to the longer Contact Points included with your system.



CAUTION

- You may need to trim the hair in the area of the Contact Points. Never shave the dog's neck; this may lead to a rash or infection.
- You should not make the collar any more tight than is required for good contact. A collar that is too tight will increase the risk of pressure necrosis in the contact area.

2. The Collar Receiver should fit snugly, yet loose enough to allow one finger to fit between the strap and your dog's neck (3C).
3. Allow your dog to wear the collar for several minutes, and then recheck the fit. Check the fit again as your dog becomes more comfortable wearing the Collar Receiver.



STEP :: 04

FIND THE BEST INTENSITY LEVEL FOR YOUR DOG

Your ProHunter® 2525 remote training system has multiple intensity levels. This allows you to choose the static stimulation that is best for your dog.

NOTE: Always start at the lowest level and work your way up.

For training efficiency, it is important to find the right intensity level for your dog. This is called the Recognition Level, at which your dog looks around in curiosity, or flicks his ears.

FINDING YOUR DOG'S RECOGNITION LEVEL:

NOTE: Every dog is different and you cannot predict where your dog's Recognition Level will be. Watch closely for any slight change in behavior that tells you your dog is feeling the static stimulation.

1. With the Collar Receiver turned on and properly fitted to your dog, set the Remote Transmitter's Intensity Dial at Level 1 and press the Continuous Static Stimulation Button for 1 to 2 seconds.
2. If your dog shows no reaction to Level 1, go to Level 2 and repeat the process.
3. YOUR DOG SHOULD NOT VOCALIZE OR PANIC WHEN RECEIVING STATIC STIMULATION. IF THIS HAPPENS, THE STATIC STIMULATION LEVEL IS TOO HIGH AND YOU NEED TO GO BACK TO THE PREVIOUS LEVEL AND REPEAT THE PROCESS.
4. Once you find your dog's Recognition Level, this is the level you should use when you begin a training exercise.
5. If you have progressed to the highest static stimulation level while searching for your dog's Recognition Level and your dog continues to show no response, check to see if the Collar Receiver is snug against your dog's neck. Then go back to Intensity Level 1 and repeat the process. If your dog still does not indicate he is feeling the static stimulation, you have three options: you may either have to trim the hair beneath the Contact Points, switch to the longer Contact Points included in your system, or change to a higher static stimulation range.

If after completing all of these steps your dog still does not indicate he is feeling the static stimulation, please contact the Customer Care Center at 1-800-732-0144.

CHANGING STATIC STIMULATION RANGES

The ProHunter® 2525 Collar Receiver comes with 3 static stimulation ranges (low, medium and high). There are 9 stimulation levels within each range, with 1 being the lowest and 9 being the highest. The default range setting is 2 or medium.

To change the range of static stimulation, follow these steps:

1. Make sure the Collar Receiver is off.
2. Then turn the unit on by pressing and releasing the On/Off button.
3. After the Indicator Light turns off and within 5 seconds, press and hold the On/Off button for 3 seconds.
4. The Collar Receiver will then beep once and the Indicator Light will flash orange. This indicates **Low** stimulation range. If **Medium** or **High** are desired, continue to hold the button until the number of beeps/orange flashes equals the desired stimulation range shown in the chart below.
5. Release the button once the desired range is selected; the Collar Receiver will turn off.
6. Turn the unit back on. It will then beep according to the static stimulation range selected in Step 4.

	STATIC STIMULATION RANGE	DOG TEMPERAMENT
1 beep	Low	Mild
2 beeps	Medium	Moderate
3 beeps	High	Stubborn

GENERAL TRAINING TIPS

BEFORE TRAINING YOUR DOG WITH THIS PRODUCT:

You will have the most success using this remote trainer if you always remember to teach a command before trying to reinforce the command with a remote trainer. We recommend that you read the enclosed Training Guide and watch the enclosed DVD before training with this remote trainer. Your training will be easier and proceed faster if you follow the guidelines in these teaching assistants. In addition, always keep the following training tips in mind:

- Eliminate one misbehavior or teach one obedience command at a time. If you move too fast with the training, your dog may become confused.
- Be consistent. Give your dog a tone, vibration, or static stimulation with each misbehavior.
- Do not overcorrect your dog. Use as few stimulations as possible to train your dog.
- Restrict your dog from situations in which he has a history of misbehaving unless you can supervise him and use the ProHunter 2525 for applying tone, vibration, or static stimulation.
- If you notice one situation in which your dog misbehaves repeatedly, set up this situation as a training session. This will dramatically increase your chances of success.
- If your dog has a timid reaction to the tone, vibration, or static stimulation (especially the first couple of times), do not be alarmed. Redirect his attention to a simple and appropriate behavior (i.e. a known command, such as “Sit”).
- Never use the ProHunter 2525 to correct or eliminate any form of aggressive behavior. If your dog exhibits such behavior, contact a professional trainer. Aggression in dogs is the result of many factors – it may be a learned behavior or it may be brought on as a result of fear. Another factor contributing to aggression in dogs is social dominance. Every dog is different.

At this point, your remote trainer is ready to use. The Transmitter is factory set to mode 1 in the toggle **up** position, but you may wish to change the mode to fit your situation. See STEP 5, for an explanation of mode options.

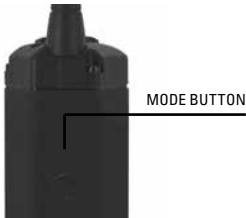
STEP :: 05

PROGRAM THE REMOTE TRANSMITTER

The ProHunter® 2525 Remote Transmitter has eight operational modes in the toggle **up** position and nine operational modes in the toggle **down** position to allow you to select the best match for your type or style of training. The Remote Transmitter is factory set to Mode 1 (toggle up). There is also one programming mode: Mode 9 (in toggle up position - Change ID Codes) on page 20.

TO CHANGE THE MODE:

1. Referring to the following tables, adjust the Intensity Dial and toggle switch to your desired mode.
2. Turn the Remote Transmitter over.
3. Using a pen or the tine on the buckle of your collar strap, press and release the Mode Button. When the Mode Button is pressed, the Transmitter Indicator Light will be solid in color. When it is released, it will flash the mode selected.



For example, if mode 5 is desired in the toggle **up** position, adjust the Intensity Dial to Level 5. Once the mode button has been depressed, the Transmitter Indicator Light will be solid, and once the mode button is released, the Transmitter Indicator Light will flash 5 times. However, if you select mode 9 (ID Code) in the toggle **up** position, the light will remain solid in color once the mode button is released.



MODE Toggle switch in the UP position	TOP BUTTON FUNCTION	MIDDLE BUTTON FUNCTION	BOTTOM BUTTON FUNCTION
1*	Tone Only	Continuous MEDIUM stimulation (Level set by intensity dial) OR Vibe if V/T on dial	Continuous LOW stimulation (Level set by intensity dial) OR Vibe if V/T on dial
2	Vibration Only	Continuous MEDIUM stimulation (Level set by intensity dial) OR Tone if V/T on dial	Continuous LOW stimulation (Level set by intensity dial) OR Tone if V/T on dial
3	Dog 1	Dog 2	Dog 3
4	Dog 1	Dog 2	Dog 3
5	Dog 1/4 Continuous HIGH stimulation (Level set by intensity dial) OR Tone if V/T on dial	Dog 2/5 Continuous HIGH stimulation (Level set by intensity dial) OR Tone if V/T on dial	Dog 3/6 Continuous HIGH stimulation (Level set by intensity dial) OR Tone if V/T on dial
6	Dog 1/4 Continuous HIGH stimulation (Level set by intensity dial) OR Vibe if V/T on dial	Dog 2/5 Continuous HIGH stimulation (Level set by intensity dial) OR Vibe if V/T on dial	Dog 3/6 Continuous HIGH stimulation (Level set by intensity dial) OR Vibe if V/T on dial
7	Continuous HIGH stimulation (**Programmed level) OR Tone if V/T on dial	Continuous MEDIUM stimulation (Level set by intensity dial) OR Tone if V/T on dial	Continuous LOW stimulation (Level set by intensity dial) OR Tone if V/T on dial
8	Dog 1	Dog 2	Dog 3
9 (ID CODE)	See STEP 9	N/A	N/A

MIDDLE + BOTTOM BUTTON FUNCTION	TOGGLE SWITCH FUNCTION UP/DOWN	# OF DOGS
Continuous HIGH stimulation (Level set by intensity dial) OR Vibe if V/T on dial	Dog 1/2	2
Continuous HIGH stimulation (Level set by intensity dial) OR Tone if V/T on dial	Dog 1/2	2
N/A	UP: Continuous HIGH stimulation (Level set by intensity dial) OR Vibe if V/T on dial Down: Tone Only	3
N/A	UP: Continuous HIGH stimulation (Level set by intensity dial) OR Tone if V/T on dial Down: Vibe Only	3
N/A	Dog 1-3 / 4-6	6
N/A	Dog 1-3 / 4-6	6
Continuous HIGH Stimulation (Level set by intensity dial) OR Tone if V/T on dial	Dog 1/2	2
N/A	UP: Continuous HIGH stimulation (Level set by intensity dial) OR Vibe if V/T on dial Down: Remote Beeper (SD-BEEP) Call/Locate Mode - single tone***	3
N/A	UP	N/A

* Factory Default Mode

** Programmed Static Stimulation Level: After selecting mode 7 and while the Transmitter Indicator Light is still solid in color, turn the Intensity Dial to the desired Continuous Stimulation level and press the Top Button to set the level. The Transmitter Indicator Light will quickly flash acknowledging your selection. For example, if you turned the Intensity Dial to 3, the Top Button on your Remote Transmitter will transmit Continuous High Stimulation at level 3 when pressed. If no level is selected after 15 seconds, the previous level will be used. If no level has ever been set, the unit will default to level 9.

*** To enable Run Mode, press and hold the corresponding Locate Button for 3 seconds.

MODE Toggle switch in the DOWN position	TOP BUTTON FUNCTION	MIDDLE BUTTON FUNCTION	BOTTOM BUTTON FUNCTION
1	Tone Only	Momentary HIGH stimulation (Level set by intensity dial) OR Vibe if V/T on dial	Momentary LOW stimulation (Level set by intensity dial) OR Vibe if V/T on dial
2	Vibe Only	Momentary HIGH stimulation (Level set by intensity dial) OR Tone if V/T on dial	Momentary LOW stimulation (Level set by intensity dial) OR Tone if V/T on dial
3	Remote Beeper (SD-BEEP) Call/Locate Mode - single tone*	Continuous MEDIUM stimulation (Level set by intensity dial) OR Vibe if V/T on dial	Continuous LOW stimulation (Level set by intensity dial) OR Vibe if V/T on dial
4	Remote Launcher**	Continuous HIGH stimulation (Level set by intensity dial) OR Vibe if V/T on dial	Tone Only
5	Remote Launcher**	Continuous HIGH stimulation (Level set by intensity dial) OR Tone if V/T on dial	Vibe Only
6	Remote Launcher**	Dog 1	Dog 2
7	Remote Launcher**	Dog 1	Dog 2
8	Tone Only	Continuous HIGH stimulation (Level set by intensity dial) OR Tone if V/T on dial	Vibe Only
9	Tone Only	Continuous HIGH stimulation (Level set by intensity dial) OR Tone if V/T on dial	Vibe Only

MIDDLE + BOTTOM BUTTON FUNCTION	TOGGLE SWITCH FUNCTION UP/DOWN	# OF DOGS
Continuous HIGH stimulation (Level set by intensity dial) OR Vibe if V/T on dial	Dog 1/2	2
Continuous HIGH stimulation (Level set by intensity dial) OR Tone if V/T on dial	Dog 1/2	2
Continuous HIGH stimulation (Level set by intensity dial) OR Vibe if V/T on dial	Dog 1/2	2
N/A	Dog 1/2	2
N/A	Dog 1/2	2
N/A	UP: Continuous HIGH stimulation (Level set by intensity dial) OR Vibe if V/T on dial Down: Tone Only	2
N/A	UP: Continuous HIGH stimulation (Level set by intensity dial) OR Tone if V/T on dial Down: Vibe Only	2
N/A	Dog 1/2	2
N/A	Dog 1/2	2

* To enable Run Mode, press and hold the corresponding Locate Button for 3 seconds.

** Remote Launcher: Match your ProHunter® 2525 Transmitter to your Launcher Receiver by pressing and holding the Launcher Receiver's On/Off button. When a "P" appears on the Receiver's LCD, press the Top Button on your Remote Transmitter. Your Remote Transmitter and Launcher Receiver are now matched. The Top Button on your Remote Transmitter will be used to activate your Launcher basket.

STEP :: 06

MATCH THE COLLAR RECEIVER AND REMOTE TRANSMITTER

To match the Collar Receiver to work with a new Remote Transmitter or to reprogram a new Collar Receiver to work with your existing Remote Transmitter:

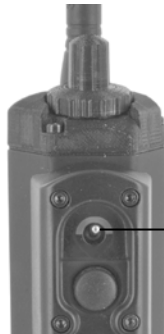
1. Flip the toggle switch on your Remote Transmitter to the **up** position.
2. Turn the Collar Receiver off.
3. Press and hold the Collar Receiver's On/Off Button. The Indicator Light will come on, then turn off after 4-5 seconds. If the On/Off Button is released too early, the Receiver Indicator Light will begin flashing as normal. If this occurs, start over and repeat from (2).
4. After the Receiver Indicator Light has turned off, release the On/Off Button.
5. Press and hold the Top Button on the Remote Transmitter until the Receiver Indicator Light flashes 5 times. Once the Receiver Indicator Light has flashed 5 times, the Collar Receiver has been matched and will begin flashing as normal. If the Receiver Indicator Light does not flash 5 times, start over and repeat from (1).

STEP :: 07

PROGRAM THE SYSTEM FOR TWO-DOG OPERATION

SportDOG® Collar Receivers can be set to respond to either the **up** or **down** toggle switch position. A SportDOG Add-A-Dog® Collar Receiver must be purchased to train a second dog in two-dog mode. **Please refer to the back cover for compatible Add-A-Dog Collar Receivers for this system.**

1. Program the Remote Transmitter to any of the 2-Dog modes found on pages 14-17.
2. Then flip the toggle switch to the **up** position to program the first Collar Receiver.
 - A. Turn the Collar Receiver off.
 - B. Press and hold the Collar Receiver's On/Off Button. The Indicator Light will come on, then turn off in 4-5 seconds. If the On/Off Button is released too early, the Receiver Indicator Light will begin its normal flashing. If this occurs, start over and repeat from A.
 - C. After the Receiver Indicator Light has turned off, release the On/Off Button.
 - D. Press and hold the Top Button on the Remote Transmitter until the Receiver Indicator Light flashes 5 times.
3. Program the second Collar Receiver the same way using A through D above, but with the toggle switch in the **down** position.



TOGGLE SET TO
UP FOR DOG 1 OR
TOGGLE SET TO
DOWN FOR DOG 2

STEP :: 08

PROGRAM THE SYSTEM FOR THREE AND SIX-DOG OPERATION

SportDOG® Add-A-Dog® Collar Receivers must be purchased to train additional dogs.

Please refer to the back cover for compatible Add-A-Dog Collar Receivers for this system.

THREE DOG OPERATION

1. Making sure the toggle switch on your Remote Transmitter is in the **up** position, program the Remote Transmitter to mode 3, 4, 5, 6 or 8 (see pages 14-15).
2. Program the first Collar Receiver:
 - A. Turn the Collar Receiver off.
 - B. Press and hold the Collar Receiver's On/Off Button. The Indicator Light will come on, then turn off in 4-5 seconds. If the On/Off Button is released too early, the Receiver Indicator Light will begin its normal flashing. If this occurs, start over and repeat from A.
 - C. After the Receiver Indicator Light has turned off, release the On/Off Button.
 - D. Press and hold the **Top Button** on the Remote Transmitter until the Receiver Indicator Light flashes 5 times. If the Receiver Indicator Light does not flash 5 times, start over and repeat from A.
3. Program the second Collar Receiver using A through D above, but using the **Middle Button** in place of the Top Button.
4. Program the third Collar Receiver using A through D above, but using the **Bottom Button** in place of the Top Button.

SIX DOG OPERATION

Making sure the toggle switch on your Remote Transmitter is in the **up** position, program the Remote Transmitter to mode 5 or 6 (see pages 14-15).

For six-dog operation repeat above Steps 2-4 with the toggle switch in the **up** position for dogs 1-3; then flip the toggle switch to the **down** position, and repeat above Steps 2-4 for dogs 4-6.

CHANGE ID CODES

An ID Code is the signal identification between the Remote Transmitter and Collar Receiver. Each is programmed in 1 of 2,000 ID Codes from the factory. The ProHunter® 2525 has the flexibility to program two or more Remote Transmitters to the same ID Code, allowing them to control one Collar Receiver. There are 100 programmable ID Codes available.

TO MANUALLY PROGRAM THE REMOTE TRANSMITTER'S ID CODE FOLLOW THESE STEPS:

1. Turn the Intensity Dial to level 9, flip the toggle switch up, and then press and release the Mode Button on the back of your Remote Transmitter. This does not change the mode, so the current mode will still be active after the ID change is complete.
2. Once the Mode Button is released, the Transmitter Indicator Light will illuminate solid green and stay on for 15 seconds.
3. While the green Indicator Light is on, turn the Intensity Dial to select the 1st digit of the ID, using 1-9, and then press and release the Top Button. The green Indicator Light will flash rapidly confirming selection.
4. Again, while the green Indicator Light is on, turn the Intensity Dial to select the 2nd digit of the ID, using 1-9, and then press and release the Top Button. The green Indicator Light will flash rapidly confirming selection. The 2nd digit is optional, and if not desired, just wait until the green light turns off and refrain from pressing the Top Button.
5. At the end of 15 seconds, or after the second press of the Top Button, the green Indicator Light will turn off and the ID of the unit will be updated. At this point, the unit will be in the same mode it was in prior to setting the ID.
6. Upon changing the ID Code, you will need to match the Collar Receiver to the Remote Transmitter (see STEP 6 on page 18).

NOTE: If you press the Top Button only once (skipping Step 4) the ID is still a two digit ID. The left digit is defaulted to 1. For example, if you selected 6 in Step 3 and pressed the button only once, the ID you get will be 16.

TO RETURN THE UNIT TO THE FACTORY ID FOLLOW THESE STEPS:

1. Turn the Intensity Dial to level 9, flip the toggle switch up, and then press and release the Mode Button on the back of your Remote Transmitter. This does not change the mode, so the current mode will still be active after the ID change is complete.
2. Do not press any buttons and wait until the green Indicator Light turns off.
3. You will now need to match the Collar Receiver to the Remote Transmitter (see STEP 6 on page 18).

ACCESSORIES

To purchase additional accessories for your SportDOG Brand® ProHunter® 2525, contact the Customer Care Center at 1-800-732-0144 or visit our website at www.sportdog.com.

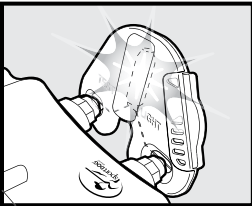
Component	Part Number
¾" Black Collar Strap	SAC00-10816
¾" Blaze Orange Collar Strap	SAC00-10815
¾" Blue Collar Strap	SAC00-11921
¾" Red Collar Strap	SAC00-11820
¾" Yellow Collar Strap	SAC00-12795
¾" Green Collar Strap	SAC00-10817
¾" Pink Collar Strap	SAC00-14053
Collar Receiver (does not include collar strap)	SDT00-15944
Remote Transmitter with antenna	SDT00-13488
Antenna	SAC00-13513
Contact Points (Short)	SAC00-12571
Contact Points (Long)	SAC00-12570
Battery Kit (Collar Receiver)	SAC54-15955
Battery Kit (Remote Transmitter)	SAC00-13514
Car Charger	SAC00-12842
Adapter	SDT00-12272
Accessory pack (Includes charge port covers and screws)	SAC00-12875
Charging cradle	SDT00-15942

FREQUENTLY ASKED QUESTIONS	
What purpose does V/T on the intensity dial serve?	Depending upon which mode you have selected, you will be able to give continuous or momentary static stimulation to your dog using the numbers on the Intensity Dial, or give vibration or tone with the Intensity Dial set to V/T all with the same button on your Remote Transmitter.
Is the static stimulation safe for my dog?	While Continuous and/or Momentary static stimulation may be unpleasant, it is harmless to your dog. Electronic training devices require interaction and training from the owner to achieve desired results.
How old does a dog have to be before using the ProHunter® 2525?	Your dog should be able to learn basic obedience commands such as “Sit” or “Stay.” The Collar Receiver may be too large for dogs under 8 pounds.
Once my dog is trained and has been obeying my commands, will my dog have to continue to wear the Collar Receiver?	Your dog may need to wear the Collar Receiver from time to time for reinforcement. Also, many hunters keep the Collar Receiver on their dog(s) while hunting for maximum control.
Is the Collar Receiver waterproof?	Yes. If the rechargeable battery pack ever needs to be replaced, make sure the o-ring and o-ring groove are free from dirt and debris.
Can my Collar Receiver be used around salt water?	If the Collar Receiver is used in or around salt water, the Collar Receiver should be rinsed with fresh water following each use.
Can I use the ProHunter 2525 with more than one dog?	Yes, the ProHunter 2525 is expandable to a maximum of 6 dogs. SportDOG® Add-A-Dog® Collar Receivers must be purchased. Please refer to back cover for a list of compatible Collar Receivers.
Can I use the ProHunter 2525 on aggressive dogs?	We do not recommend any of our products to be used on aggressive dogs. We recommend you contact your local veterinarian or professional trainer to determine if your dog might be aggressive.
Will I get exactly two miles of range with the ProHunter 2525?	The range you get with your ProHunter 2525 will vary according to terrain, weather, vegetation, as well as transmission from other radio devices. To get the maximum amount of range, please refer to “How the System Works” section of this guide.
How long can I continuously deliver static stimulation to my dog?	The maximum amount of time you can press the Continuous Stimulation Button and deliver static stimulation to your dog continuously is 10 seconds. After 10 seconds, the Remote Transmitter will “time-out,” and the Continuous Stimulation Button must be released and pressed again.
What do I do if my dog’s neck becomes red and irritated?	This condition is due to the Contact Points irritating the skin. Discontinue use of the Collar Receiver for a few days. If the condition persists beyond 48 hours, see your veterinarian. Once the skin returns to normal, resume use, and monitor the skin condition closely.
The Intensity Dial seems difficult to rotate. Is this normal?	Yes. This prevents accidental changes in intensity and encourages an optimal waterproof seal. The knob will “break in” and be slightly easier to turn as you use it.

Can I attach a leash to the ProHunter 2525?	DO NOT attach a leash to the ProHunter 2525. You may put a separate non-metallic collar on your dog’s neck and attach a leash. Be sure the extra collar does not interfere with the Contact Points.
Can I program my ProHunter® 2525 to work with my other SportDOG Brand® systems?	Yes. You can program your ProHunter 2525 to work with SD-425, SD-425S, SD-425CAMO, SD-825, SD-1225, SD-1825, SD-1825CAMO, SD-1875, or SD-3225 systems. Because it operates at a different frequency it is not backwards compatible with any other SportDOG Brand system.
My Remote Transmitter is sending a signal to more than one Collar Receiver unintentionally; what should I do?	In the rare event this occurs, you can change your Remote Transmitter’s ID Code (see Change ID Codes on Page 20) to solve this.

TROUBLESHOOTING	
The answers to these questions should help you solve any problem you have with this system. If they do not, please contact the Customer Care Center at 1-800-732-0144 or visit our website at www.sportdog.com .	
My dog is not responding when I press a button.	<ul style="list-style-type: none"> • Check to see if the Collar Receiver has been turned on and the Indicator Light is flashing. • If your range has reduced from the first time you have used it, please check to see if the battery is low in either the Remote Transmitter or Collar Receiver. • Many factors can impact the range you have with the ProHunter 2525. For a list of these factors, please refer to “How the System Works”. • You can verify the Collar Receiver is delivering static stimulation to your dog by placing the test light, enclosed in your kit, on the Collar Receiver. Please refer to the “Test Light Instructions” section for details. • Increase the Intensity Dial. Refer to “Find the Best Intensity Level for Your Dog” for more information. • Increase the Static Stimulation Range. Refer to “Changing Static Stimulation Ranges” for more information. • Make sure the Collar Receiver’s Contact Points are placed snugly against your dog’s skin. Refer to “Fit the Collar Receiver” for more information. • You may need to switch to the longer Contact Points included with your system or trim the hair beneath the Contact Points. • If you notice your operating time dropping to about half the original time, your Collar Receiver battery needs to be replaced. Contact the Customer Care Center to purchase a new one.
The Collar Receiver will not turn on.	<ul style="list-style-type: none"> • Make sure the Collar Receiver has been charged. The Collar Receiver will charge in 2 hours.
The Collar Receiver is not responding to the Remote Transmitter.	<ul style="list-style-type: none"> • Make sure the Remote Transmitter has been charged. The Remote Transmitter will charge in 2 hours. • Verify the Collar Receiver has been turned on and the Indicator Light is flashing. Refer to “Turning the Collar Receiver On and Off.” • Refer to “Match the Collar Receiver and Remote Transmitter.”

TEST LIGHT INSTRUCTIONS



1. Turn the Collar Receiver on.
2. Hold the Test Light Contacts to the Contact Points.
3. Press a Static Stimulation Button on the Remote Transmitter.
4. The Test Light will flash.
NOTE: At higher Static Stimulation Levels, the Test Light will flash brighter.
5. Turn the Collar Receiver off.

Save the Test Light for future testing.

NOTE: If the Test Light does not flash, recharge the battery and re-test. If the Test Light still does not flash, contact the Customer Care Center at 1-800-732-0144.

TERMS OF USE AND LIMITATION OF LIABILITY

1. TERMS OF USE

This Product is offered to you conditioned upon your acceptance without modification of the terms, conditions, and notices contained herein. Usage of this Product implies acceptance of all such terms, conditions, and notices.

2. PROPER USE

This Product is designed for use with dogs where training is desired. The specific temperament of your dog may not work with this Product. We recommend that you not use this Product if your dog is less than 8 pounds or if your dog is aggressive. If you are unsure whether this is appropriate for your dog, please consult your veterinarian, certified trainer, or contact our Customer Care Center at 1-800-732-0144.

Proper use includes reviewing the entire Operating and Training Guide provided with your Product and any specific safety information.

3. NO UNLAWFUL OR PROHIBITED USE

This Product is designed for use with dogs only. This dog training device is not intended to harm, injure, or provoke. Using this Product in a way that is not intended could result in violation of Federal, State, or local laws.

4. LIMITATION OF LIABILITY

In no event shall Radio Systems Corporation be liable for any direct, indirect, punitive, incidental, special or consequential damages, or any damages whatsoever arising out of or connected with the use or misuse of this Product. Buyer assumes all risks and liability from the use of this Product.

5. MODIFICATION OF TERMS AND CONDITIONS

Radio Systems Corporation reserves the right to change the terms, conditions, and notices under which this Product is offered.

FCC COMPLIANCE

This device complies with part 15 of the FCC Rules. Operation is subject to the following two conditions: (1) This device may not cause harmful interference, and (2) this device must accept any interference received, including interference that may cause undesired operation.

This equipment has been tested and found to comply with the limits for a Class B digital device, pursuant to part 15 of the FCC Rules. These limits are designed to provide reasonable protection against harmful interference in a residential installation. This equipment generates, uses, and can radiate radio frequency energy and, if not installed and used in accordance with the instructions, may cause harmful interference to radio communications. However, there is no guarantee that interference will not occur in a specific installation. If interference does occur to radio or television reception, which can be determined by turning the equipment off and on, the user is encouraged to try to correct the interference by one or more of the following measures:

- Reorient or relocate the receiving antenna
- Increase the separation between the equipment and the receiver
- Connect the equipment to an outlet on a circuit different from that to which the receiver is connected
- Contact customer service or an experienced radio/TV technician for assistance

CAUTION

Unauthorized changes or modifications to the equipment may violate FCC regulations and could void the user's authority to operate the equipment.

IC - CANADA

This device complies with Industry Canada licence-exempt RSS standard(s). Operation is subject to the following two conditions: (1) this device may not cause interference, and (2) this device must accept any interference, including interference that may cause undesired operation of the device.

Le présent appareil est conforme aux CNR d'Industrie Canada applicables aux appareils radio exempts de licence. L'exploitation est autorisée aux deux conditions suivantes : (1) l'appareil ne doit pas produire de brouillage, et (2) l'utilisateur de l'appareil doit accepter tout brouillage radioélectrique subi, même si le brouillage est susceptible d'en compromettre le fonctionnement.

This device has been designed to operate with the antennas provided with the equipment. Use of other antennas may violate Industry Canada rules and void the user's authority to operate the equipment.

Ce dispositif a été conçu pour fonctionner avec les antennes fournies avec ce produit. L'utilisation d'autres antennes peut enfreindre les règles d'Industrie Canada et annuler l'autorité de l'utilisateur quant au fonctionnement de l'équipement.

Customer Care Center / Service clientèle
800-732-0144

Monday - Friday / Lundi - Vendredi
8 am - 8 pm EST / 8h00 - 20h00 EST
Saturday / Samedi
9 am - 5 pm EST / 9h00 - 17h00 EST



BATTERY DISPOSAL

⚠ WARNING See Important Safety Information related to the battery on page 2.

This system operates on two Li-Ion battery packs (200mAh capacity for the Collar Receiver and 650mAh capacity for the Remote Transmitter). Only replace with battery received from calling the Customer Care Center at 1-800-732-0144.

Separate collection of spent batteries is required in many regions; check the regulations in your area before discarding spent batteries. Please see below for instructions on how to remove the battery from the product for separate disposal. If you wish to ship us your spent batteries for disposal, contact the Customer Care Center.

AT END OF PRODUCT LIFE, USE THESE BATTERY REMOVAL INSTRUCTIONS FOR FINAL DISPOSAL (DO NOT OPEN THE COLLAR RECEIVER OR REMOTE TRANSMITTER UNTIL YOU HAVE RECEIVED THE REPLACEMENT):

- Using a 5/64” hex key for your Remote Transmitter and/or a 3/32” Allen wrench for your Collar Receiver, remove the case screws.
- Remove the case back/cover from your Collar Receiver and/or the bottom cover from your Remote Transmitter.
- Remove the old battery pack.

⚠ WARNING

- When removing the old battery pack, care must be taken when gripping the connector firmly to avoid damaging the wires. Shorting the battery wires may cause fire or explosion.
- These instructions are not valid for repair or battery replacement. Replacing the battery with a battery not specifically approved by Radio Systems Corporation may cause fire or explosion. Please call the Customer Care Center at 1-800-732-0144 to avoid invalidating your warranty.

This product is protected by the following patents:
U.S. Patent Numbers: 6,901,883; 7,420,136; 6,184,790; 7,647,545; 6,459,378
Canada Patent Number: 2,565,318



SPORTDOG BRAND® ADD-A-DOG® COLLAR RECEIVERS

SPORTDOG.COM

DO NOT PRINT
THIS PAGE



SPORThunter®
SDR::A ADD-A-DOG

WETLANDHunter®
SDR::AW ADD-A-DOG

HOUNDHunter®
SDR::AH ADD-A-DOG

UPLANDHunter®
SDR::AB ADD-A-DOG

NOTE: SDR-FS, SDR-FH, SDR, SDR-CH, SDR-FC, SDR-BEEP, SDR-H, ADD-A-DOG COLLARS ARE NOT COMPATIBLE WITH THIS SYSTEM.
SDR-AF, SDR-AC, SDR-AS ADD-A-DOG COLLARS ARE COMPATIBLE WITH THIS SYSTEM.

GEAR THE WAY YOU'D DESIGN IT®

©2011, 2016 RADIO SYSTEMS CORPORATION

Radio Systems Corporation • 10427 PetSafe Way • Knoxville, TN 37932 • 1-800-732-0144
400-1295/1

Radio Systems® CORPORATION <small>The world leader in pet training products</small>	RSC Part #: 400-1295	
	Description: MANUAL SD-2525	
	Created by: AR	Updated by: S.Synar
	Initial Creation Date: 5/10/11	
	Approved by: G.GOODSON	
	Date Approved: 5/15/11	
	Program used: INDESIGN CC	
Pages: 28 Material: Cover:128g C2S; Body:100g Wood free paper Color: White Printing: Cover: CMYK X K Body: K x K Coating: Cover with anti-friction Aqueous Varnish; Cut, fold, 2 saddle stitch, and Bulk Pack	Revision: 001 ECO: RSC14411	
	Revision Description: CRADLE UPDATE/UPDATE BRANDING TO NEW LOOK	
	Revision Date: 9/22/16	