



SPORTHUNTER®

SD-800

Operating Guide



Please read this entire guide before beginning

Thank you for choosing SportDOG Brand.[®] Used properly, this product will help you train your dog efficiently and safely. To ensure your satisfaction, please review this owner's manual thoroughly. If you have questions regarding this product's operation, please see this manual's Frequently Asked Questions or Troubleshooting section, contact our Customer Care Center at 1-800-732-0144, or visit our website at www.sportdog.com.

Please register your product within 90 days at www.sportdog.com. By registering, you will enjoy the product's full warranty and should you ever need to call the Customer Care Center, we will be able to help you faster. Additionally, you will not have to save your product receipt as registering serves as proof of purchase. Most importantly, SportDOG[™] will never give or sell your valuable information to anyone.

SportDOG Brand[®] Product Warranty Information

All parts are covered under warranty for the life of the product. Labor is covered for the first year of ownership. Thereafter, there is a minimum service charge for the repair or replacement of the product. Misuse, loss, damage by pet, or improper handling is not covered, SportDOG[™] will not pay for loss of time, inconvenience, loss of use of your product, or any incidental or consequential damages. Warranty voided if product is resold or purchased from an online auction site.

Table of Contents

| | |
|--|----|
| Components | 3 |
| How the System Works | 3 |
| Key Definitions | 4 |
| Prepare the Remote Transmitter..... | 5 |
| Prepare the Collar Receiver..... | 6 |
| Fit the Collar Receiver..... | 8 |
| Find the Best Intensity Level for Your Dog | 8 |
| Program the Remote Transmitter | 10 |
| Reset the Collar Receiver | 11 |
| Program the Collar Receiver for Two or Three-Dog Operation | 11 |
| Accessories | 11 |
| Frequently Asked Questions | 12 |
| Troubleshooting..... | 13 |
| Test Light Instructions | 14 |
| Terms of Use and Limitation of Liability..... | 14 |
| SportDOG [™] Add-A-Dog [®] Receivers and Beeper..... | 16 |

Components



How the System Works

The SportDOG[™] SportHunter[®] 800 has been proven safe, comfortable and effective for all dogs over 8 pounds. Consistent, correct use of this product allows you to reinforce commands and correct misbehavior from up to a ½ mile. The Remote Transmitter sends a signal, activating the Collar Receiver to deliver a harmless stimulation. With proper training, a dog will learn to associate this signal with a command. Like all SportDOG products, this model features adjustable stimulation levels so you can tailor the stimulation level to your dog's temperament, eliminating the risk of over-correction.

Important: The SportHunter[®] 800 has a range of up to a ½ mile. Depending on the way you hold the Remote Transmitter, the maximum range may vary. For consistent results at longer ranges, hold the Remote Transmitter in a vertical position away from your body and above your head. Terrain, weather, vegetation, transmission from other radio devices, and other factors will affect the maximum range.



Key Definitions

Remote Transmitter: Transmits the radio signal to the Collar Receiver. It is waterproof and can be submerged in water.

Transmitter Indicator Light: Indicates that a button is pressed and also serves as a low-battery indicator.

Intensity Dial: Provides multiple levels of stimulation so you can match the correction to your dog's temperament.

Upper Button: This button is factory-set to deliver continuous stimulation.

Lower Button: This button is factory-set to deliver momentary stimulation, or a "Nick."

Side Button: This button is factory-set to deliver a tone without stimulation.

Collar Receiver: Receives the radio signal from the Remote Transmitter and delivers the stimulation and/or a tone for correcting your dog. It is waterproof and can be submerged in water.

On/Off Button: Momentarily pressing and holding this button turns the Collar Receiver on and off.

Contact Points: The contacts through which the Collar Receiver delivers stimulation when a Remote Transmitter button programmed for Continuous or Momentary Stimulation is pressed.

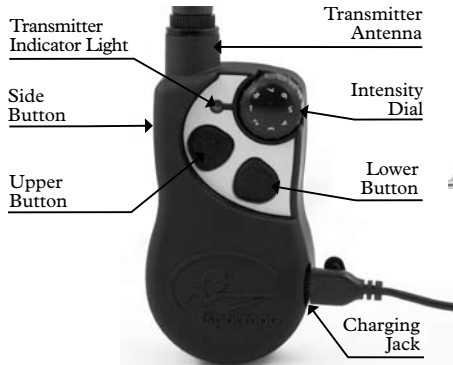
Receiver Indicator Light: Indicates when the Collar Receiver has been turned on or off and also serves as a low-battery indicator.

Charging Jacks: For connecting the charger. Although the Collar Receiver and Remote Transmitter are waterproof without it, keep the cover in place when not charging to keep debris out of the opening.

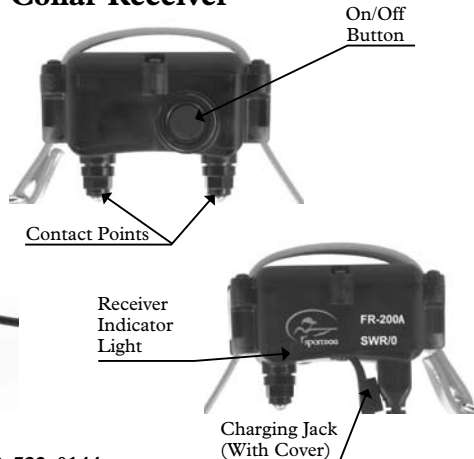
Continuous Stimulation: When a button is programmed for Continuous Stimulation, you control both when and how long stimulation is delivered to your dog through the Collar Receiver's Contact Points. When a Continuous Stimulation button is pressed for 8 seconds or more, the Remote Transmitter will "time-out." The button will need to be released and pressed again before additional stimulation can be delivered.

Momentary (Nick) Stimulation: When a button is programmed for Momentary Stimulation, stimulation is delivered for 5/100 of a second, regardless of how long the button is pressed.

Remote Transmitter



Collar Receiver



Step 1 Prepare the Remote Transmitter

1

Charge the Remote Transmitter

1. Lift the rubber cover protecting the Charging Jack.
2. Connect one of the charger connectors to the Charging Jack.
3. Plug the charger into a standard 120-volt AC wall outlet.
4. Charge the Remote Transmitter for 24 hours for the first charge. Recharges take only 12 hours.
Note: The Transmitter Indicator Light will flash after 12 hours of charging. For the first charge, continue to charge the Remote Transmitter for an additional 12 hours.
5. When charging is complete, replace the rubber cover.



Note: Approximate battery life between charges is 40 to 60 hours, depending on frequency of use.

Transmitter Indicator Light

| Remote Transmitter Function | Indicator Light Response |
|--|--------------------------|
| Continuous Stimulation or Tone Only button pressed | Solid in color |
| Momentary (Nick) Stimulation button pressed | Single flash |
| Low battery – Continuous Stimulation or Tone Only button pressed | Flashes continuously |

Step 2 Prepare the Collar Receiver

Charge the Collar Receiver

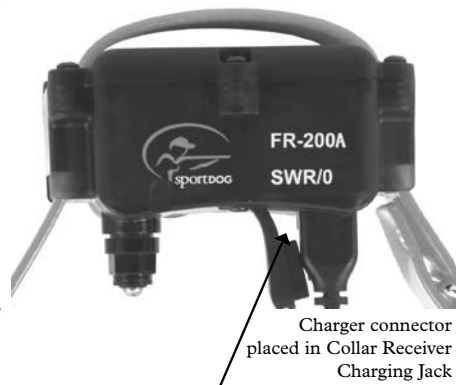
1. Lift the rubber cover protecting the Charging Jack.
2. Connect the charger connector to the Charging Jack.
3. Plug the charger into a standard 120-volt AC wall outlet.
4. Charge the Collar Receiver for 24 hours for the first charge.

Recharges take only 12 hours.

Note: The Receiver Indicator Light will flash after 12 hours of charging.

For the first charge, continue to charge the Collar Receiver for an additional 12 hours.

5. When charging is complete, replace the rubber cover.

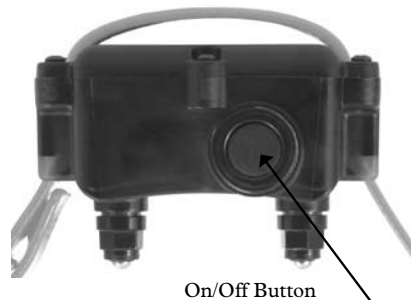


If the Collar Receiver is used in or around salt water, the Collar Receiver should be rinsed with fresh water following each use. Prior to rinsing, the rubber charging jack cover should be removed from the power plug socket and left out until the Collar Receiver has air dried.

To Turn the Collar Receiver On:

1. Press and hold the On/Off Button until the Receiver Indicator Light comes on and the Collar Receiver beeps 5 times.
2. Release the On/Off Button.

The Receiver Indicator Light will flash until the Collar Receiver is turned off. The flashing light indicates the Collar Receiver is ready to receive a radio signal from the Remote Transmitter.



To Turn the Collar Receiver Off:

1. Press and hold the On/Off Button until the Receiver Indicator Light comes on and the Collar Receiver beeps 2 times.
2. Release the On/Off Button.

To extend the life between charging cycles, turn the Collar Receiver off when it is not in use.

Note: Approximate battery life between charges is 40 hours, depending on frequency of use.

Receiver Indicator Light

| Operational Mode | Light Color | Light Function | Battery Status | Speaker Function |
|---|-------------|--|----------------|---|
| Unit is charging < 12 hours | Red | Light is solid | | |
| Unit is charging > 12 hours | Green | Light is flashing once per second | | |
| Unit is turned on via On/Off Button | Green | Light is solid in color during beep sequence | N/A | Beeps 5 times |
| Unit is turned off via On/Off Button | Green | Light is solid in color during beep sequence | Good | Beeps 2 times |
| Unit is turned off via On/Off Button | Red | Light is solid in color during beep sequence | Low | Beeps 2 times |
| Unit is on | Green | Light flashes once per second | Good | N/A |
| Unit is on | Red | Light flashes once per second | Low | N/A |
| Unit is delivering continuous stimulation | Red | Light is solid in color for as long as button is pressed | N/A | N/A |
| Unit is delivering momentary stimulation | Red | Light will quickly flash once no matter how long button is pressed | N/A | N/A |
| Unit is delivering tone | Off | N/A | N/A | Unit will beep for as long as button is pressed |

Rechargeable Batteries

- The rechargeable Nickel Metal Hydride (NiMH) batteries are not memory sensitive and do not require depletion before charging.
- The batteries come partially charged from the factory, but will require a full charge before the first use (24 hours).
- Remember - Always keep batteries away from flame.
- **When storing the unit for long periods, remember to regularly give batteries a full charge (12 hours). This should be done once every 4 to 6 weeks.**
- To maximize battery life, after initial charge, it is not recommended to leave the battery plugged in for more than 12 hours.
- If your equipment has not been charged for an extended period, you may experience a decrease in battery life the first few uses. Afterwards, the battery life will return to previous capacity levels.
- You should expect hundreds of recharge cycles from your batteries. However, all rechargeable batteries lose capacity over time relative to the number of recharge cycles they experience. This is normal. If your operating time drops to half of the original life, contact the Customer Care Center to purchase a new battery.
- The batteries should last for a period of 3-5 years. When a battery needs replacement, you can order a new pack by calling our Customer Care Center at 1-800-732-0144. Please do not open the Collar Receiver or Remote Transmitter until you have received the replacement.

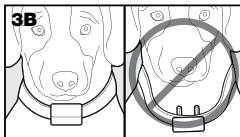
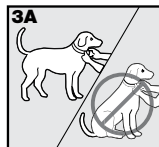
Step 3 Fit the Collar Receiver

3

Important: The proper fit and placement of the Collar Receiver is important for effective training. The Contact Points must have direct contact with your dog's skin.

To ensure a proper fit, follow these steps:

1. With your dog standing (3A), center the Collar Receiver so the Contact Points are underneath your dog's neck, touching the skin (3B). If your dog has a long or thick coat, you have two options to ensure consistent contact: either trim the hair around the Contact Points or switch to the longer Contact Points included with your system.
2. The Collar Receiver should fit snugly, yet loose enough to allow one finger to fit between the strap and your dog's neck (3C).
3. Allow your dog to wear the collar for several minutes, and then recheck the fit. Check the fit again as your dog becomes more comfortable wearing the Collar Receiver.



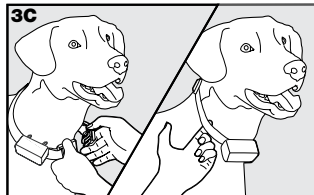
Care and Cleaning

To ensure the effectiveness of this product and the comfort and safety of your dog, check the fit of his collar frequently.

This guide describes proper collar fitting. If you notice that your dog is experiencing skin irritation, discontinue use of the collar for a few days. If the condition persists beyond 48 hours, see your veterinarian.

To prevent skin irritation from occurring:

- The Collar Receiver should not be worn for more than 8 hours out of every 24-hour period.
- Your dog's neck and the Contact Points must be washed weekly with a washcloth and mild hand soap, then rinsed thoroughly.



2. If your dog shows no reaction to Level 1, go to Level 2 and repeat the process.
3. YOUR DOG SHOULD NOT VOCALIZE OR PANIC WHEN RECEIVING STIMULATION. IF THIS HAPPENS, THE STIMULATION LEVEL IS TOO HIGH AND YOU NEED TO GO BACK TO THE PREVIOUS LEVEL AND REPEAT THE PROCESS.
4. Once you find your dog's Recognition Level, this is the level you should use when you begin a training exercise.
5. If you have progressed to Level 8 while searching for your dog's Recognition Level and your dog continues to show no response, check to see if Collar Receiver is snug against your dog's neck. Then go back to Intensity Level 1 and repeat the process. If your dog still does not indicate he is feeling the stimulation, you have two options: you may either have to trim the hair beneath the Contact Points or switch to the longer Contact Points included in your system.

If after completing all of these steps your dog still does not indicate he is feeling the stimulation, please contact Customer Care Center at 1-800-732-0144.

General Training Tips

Before Training Your Dog with This Product:

You will have the most success using this remote trainer if you always remember to teach a command before trying to reinforce the command with a remote trainer. We recommend that you read the enclosed Training Guide and watch the enclosed DVD before training with this remote trainer. Your training will be easier and proceed faster if you follow the guidelines in these teaching assistants. In addition, always keep the following training tips in mind:

- Eliminate one misbehavior or teach one obedience command at a time. If you move too fast with the training, your dog may become confused.
- Be consistent. Give your dog a tone and/or stimulation with each misbehavior.
- Do not overcorrect your dog. Use as few stimulations as possible to train your dog.
- Restrict your dog from situations in which he has a history of misbehaving unless you can supervise him and use the SportHunter® 800 for applying tone or stimulation.
- If you notice one situation in which your dog misbehaves repeatedly, set up this situation as a training session. This will dramatically increase your chances of success.
- If your dog has a timid reaction to the tone or stimulation (especially the first couple of times), do not be alarmed. Redirect his attention to a simple and appropriate behavior (i.e. a known command, such as "Sit").
- Never use the SportHunter 800 to correct or eliminate any form of aggressive behavior. If your dog exhibits such behavior, contact a professional trainer. Aggression in dogs is the result of many factors – it may be a learned behavior or it may be brought on as a result of fear. Another factor contributing to aggression in dogs is social dominance. Every dog is different.

At this point, your remote trainer is ready to use. The transmitter is factory set to mode 1, but you may wish to change the mode to fit your situation. See Step 5, on the following page, for an explanation of mode options.

Step 4 Find the Best Intensity Level for Your Dog

4

The SportHunter® 800 has multiple intensity levels. This allows you to choose the stimulation that is best for your dog.

Note: Always start at the lowest level and work your way up.

For training efficiency, it is important to find the right intensity level for your dog. This is called the Recognition Level, at which your dog looks around in curiosity, or flicks his ears.

Finding Your Dog's Recognition Level:

Note: Every dog is different and you cannot predict where your dog's Recognition Level will be. Watch closely for any slight change in behavior that tells you your dog is feeling the stimulation.

1. With the Collar Receiver turned on and properly fitted to your dog, set the Remote Transmitter's Intensity Dial at Level 1 and press the Continuous Stimulation Button for 1 to 2 seconds.

Step 5 Program the Remote Transmitter

Note: The Transmitter is factory set to mode 1. The mode of the Remote Transmitter can be changed to fit your type or style of training.

To change the mode:

1. Referring to the table below, adjust the Intensity Dial to the mode you want to use.
2. Turn the Remote Transmitter over and remove the belt clip (if attached).
3. With a pen, depress and release the mode button. When the mode button is pressed, the Transmitter Indicator Light will be solid in color. When it is released, it will flash the mode selected.



For example, if mode 5 is desired, adjust the Intensity Dial to Level 5. Once the mode button has been depressed, the Transmitter Indicator Light will be solid, and once the mode button is released, the Transmitter Indicator Light will flash five times.

Note: Continuous Stimulation will transmit for no more than 8 continuous seconds no matter how long the button is pressed. To reactivate, release and repress the button.

| MODE | UPPER BUTTON FUNCTION | LOWER BUTTON FUNCTION | SIDE BUTTON FUNCTION | # OF DOGS |
|------|--|--|--|-----------|
| 1 | Continuous Stimulation with intensity level set by Intensity Dial | Momentary (Nick) Stimulation with intensity level set by Intensity Dial | Tone only | 1 |
| 2 | Continuous Stimulation with intensity level set by Intensity Dial | Continuous Stimulation with intensity level set at the maximum (8) | Tone only | 1 |
| 3 | Continuous Stimulation with intensity level set by Intensity Dial | Continuous Stimulation two levels higher than the setting on the Intensity Dial | Tone only | 1 |
| 4 | DOG #1 Continuous Stimulation with intensity level set by Intensity Dial | DOG #2 Continuous Stimulation with intensity level set by Intensity Dial | DOG #3 Continuous Stimulation with intensity level set by Intensity Dial | 3 |
| 5 | Continuous Stimulation with intensity level set to high end of reading on Intensity Dial | Continuous Stimulation with intensity level set to low end of reading on Intensity Dial | Tone only | 1 |
| 6 | Continuous Stimulation with intensity level set to high end of reading on Intensity Dial | Continuous Stimulation with intensity level set to low end of reading on Intensity Dial | Momentary (Nick) Stimulation with intensity level set by Intensity Dial | 1 |
| 7 | Continuous Stimulation with intensity level set by Intensity Dial | Tone with one-second-delayed Continuous Stimulation with intensity level set by Intensity Dial | Tone only | 1 |

Note: Modes 1, 2, 3, 4 and 7 provide 8 levels of stimulation, which correspond to the setting of the Intensity Dial. Modes 5 and 6 provide more “increments” to choose from – a total of 16 levels of stimulation. For example, in mode 5 with the Intensity Dial set at 2, the bottom button provides level 3 of 16 and the top button provides level 4 of 16.

Step 6 Reset the Collar Receiver

To reset the Collar Receiver to work with a new Remote Transmitter or to reprogram a new Collar Receiver to work with your existing Remote Transmitter:

- A. Turn the Collar Receiver off.
- B. Press and hold the On/Off Button. The Receiver Indicator Light will come on, then turn off after 4-5 seconds. If the On/Off Button is released too early, the Receiver Indicator Light will begin flashing as normal. If this occurs, start over and repeat from A.
- C. After the Receiver Indicator Light has turned off, release the On/Off Button.
- D. Press and hold the Upper Button on the Remote Transmitter until the Receiver Indicator Light flashes 5 times. You may need to hold both units 2-3 feet from each other before this occurs. Once the Receiver Indicator Light has flashed 5 times, the Collar Receiver has been reset and will begin flashing as normal. If the Receiver Indicator Light does not flash 5 times, start over and repeat from A.

Step 7 Program the Collar Receiver for Two or Three-Dog Operation

SportDOG™ Add-A-Dog® receiver(s) must be purchased to train additional dogs.

1. Program the Remote Transmitter to mode 4 (see page 10).
2. Program the first Collar Receiver.
 - A. Turn the Collar Receiver off.
 - B. Press and hold the On/Off Button. The Receiver Indicator Light will come on, then turn off in 4-5 seconds. If the On/Off Button is released too early, the Receiver Indicator Light will begin its normal flashing. If this occurs, start over and repeat from A.
 - C. After the Receiver Indicator Light has turned off, release the On/Off Button.
 - D. Press and hold the **Upper Button** on the Remote Transmitter until the Receiver Indicator Light flashes 5 times. You may need to hold both units 2-3 feet from each other. If the Receiver Indicator Light does not flash 5 times, start over and repeat from A.
3. Program the second Collar Receiver using A through D above, but using the **Lower Button** in place of the Upper Button.
4. Program the third Collar Receiver using A through D above, but using the **Side Button** in place of the Lower Button.

Accessories

To purchase additional accessories for your SportDOG Brand® SportHunter® 800, contact the Customer Care Center at 1-800-732-0144.

| Component | Part Number |
|---|-------------|
| Replacement Transmitter | SDT00-11435 |
| Replacement Receiver | SDT00-11438 |
| Replacement Collar Strap (Orange) | SAC00-10815 |
| Accessory Pack (Charge Port Plug & Screw) | RFA-239 |

Frequently Asked Questions

| | |
|---|--|
| Is the stimulation safe for my dog? | While the stimulation is unpleasant, it is harmless to your dog. Electronic training devices require interaction and training from the owner to achieve desired results. |
| How old does a dog have to be before using the SportHunter® 800? | Your dog should be able to learn basic obedience commands such as “Sit” or “Stay.” The Collar Receiver may be too large for dogs under 8 pounds. |
| Once my dog is trained and has been obeying my commands, will my dog have to continue to wear the Collar Receiver? | Your dog may need to wear the Collar Receiver from time to time for reinforcement. Also, many hunters keep the Collar Receiver on their dogs while hunting for maximum control. |
| Is the Collar Receiver waterproof? | Yes. If the rechargeable battery pack ever needs to be replaced, make sure the o-ring and o-ring groove are free from dirt and debris. |
| Can I use the SportHunter 800 with more than one dog? | Yes, SportDOG™ Add-A-Dog® Collar Receivers must be purchased and the Remote Transmitter must be changed to mode 4. Please refer to back cover for a list of compatible Collar Receivers. |
| Can I use the SportHunter 800 on aggressive dogs? | We do not recommend any of our products to be used on aggressive dogs. We recommend you contact your local veterinarian or professional trainer to determine if your dog might be aggressive. |
| Will I get exactly a 1/2 mile of range with the SportHunter 800? | The range you get with your SportHunter 800 will vary according to terrain, weather, vegetation, as well as transmission from other radio devices. To get the maximum amount of range, please refer to “How the System Works” section of this guide. |
| How long can I continuously deliver stimulation to my dog? | The maximum amount of time you can press the Continuous Stimulation Button and deliver stimulation to your dog continuously is 8 seconds. After 8 seconds, the Remote Transmitter will “time-out,” and the Continuous Stimulation Button must be released and pressed again. |
| What do I do if my dog’s neck becomes red and irritated? | This condition is due to the Contact Points irritating the skin. Discontinue use of the Collar Receiver for a few days. If the condition persists beyond 48 hours, see your veterinarian. Once the skin returns to normal, resume use, and monitor the skin condition closely. |

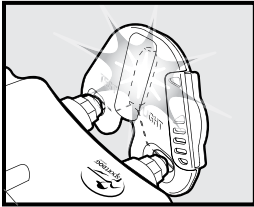
| | |
|--|---|
| Can my Collar Receiver be used around salt water? | If the Collar Receiver is used in or around salt water, the Collar Receiver should be rinsed with fresh water following each use. Prior to rinsing, the rubber charging jack cover should be removed from the power plug socket and left out until the Collar Receiver has air dried. |
| The Intensity Dial seems difficult to rotate. Is this normal? | Yes. This prevents accidental changes in intensity and encourages an optimal waterproof seal. The knob will “break in” and be slightly easier to turn as you use it. |

Troubleshooting

The answers to these questions should help you solve any problem you have with this system. If they do not, please contact the Customer Care Center at 1-800-732-0144 or visit our website at www.sportdog.com.

| | |
|---|---|
| My dog is not responding when I press a button. | <ul style="list-style-type: none"> • Check to see if the Collar Receiver has been turned on. • If your range has reduced from the first time you have used it, please check to see if the battery is low in either the Remote Transmitter or Collar Receiver. • Many factors can impact the range you have with the SportHunter® 800. For a list of these factors, please refer to “How the System Works”. • You can verify the Collar Receiver is delivering stimulation to your dog by placing the test light, enclosed in your kit, on the Collar Receiver. Please refer to the “Test Light Instructions” section for details. • Increase the Intensity Dial. Refer to “Find the Best Intensity Level for Your Dog” for more information. • Make sure the Collar Receiver’s Contact Points are placed snugly against your dog’s skin. Refer to “Fit the Collar Receiver” for more information. • If you notice your operating time dropping to about half the original time, your Collar Receiver battery needs to be replaced. Contact the Customer Care Center to purchase a new one. |
| The Collar Receiver will not turn on. | <ul style="list-style-type: none"> • Make sure the Collar Receiver has been charged. For the initial charge, be sure to charge it for 24 hours. Future charges only take 12 hours. |
| The Collar Receiver is not responding to the Remote Transmitter. | <ul style="list-style-type: none"> • Verify the Collar Receiver has been turned on. Refer to “Turning the Collar Receiver On and Off”. • Refer to “Reset the Collar Receiver.” |

Test Light Instructions



1. Turn the Collar Receiver on.
2. Hold the Test Light Contacts to the Contact Points.
3. Press a Stimulation Button on the Remote Transmitter.
4. The Test Light will flash.

Note: At higher Stimulation Levels, the Test Light will flash brighter.

5. Turn the Collar Receiver off.

Save the Test Light for future testing.

Note: If the Test Light does not flash, recharge the battery and re-test. If the Test Light still does not flash, contact the Customer Care Center at 1-800-732-0144.

Terms of Use and Limitation of Liability

1. Terms of Use

This Product is offered to you conditioned upon your acceptance without modification of the terms, conditions and notices contained herein. Usage of this Product implies acceptance of all such terms, conditions, and notices.

2. Proper Use

This Product is designed for use with dogs where training is desired. The specific temperament of your dog may not work with this Product. We recommend that you not use this Product if your dog is less than 8 pounds or if your dog is aggressive. If you are unsure whether this is appropriate for your dog, please consult your veterinarian, certified trainer or contact our Customer Care Center at 1-800-732-0144.

Proper use includes reviewing the entire Operating and Training Guide provided with your Product and any specific Caution statements.

3. No Unlawful or Prohibited Use

This Product is designed for use with dogs only. This dog training device is not intended to harm, injure, or provoke. Using this Product in a way that is not intended could result in violation of Federal, State or local laws.

4. Limitation of Liability

In no event shall Radio Systems® Corporation be liable for any direct, indirect, punitive, incidental, special or consequential damages, or any damages whatsoever arising out of or connected with the use or misuse of this Product. Buyer assumes all risks and liability from the use of this Product.

5. Modification of Terms and Conditions

Radio Systems Corporation reserves the right to change the terms, conditions and notices under which this Product is offered.

FCC COMPLIANCE

This equipment has been tested and found to comply with the limits for a Class B digital device, pursuant to part 15 of the FCC Rules. These limits are designed to provide reasonable protection against harmful interference in a residential installation. This equipment generates, uses and can radiate radio frequency energy and, if not installed and used in accordance with the instructions, may cause harmful interference to radio communications. However, there is no guarantee that interference will not occur in a specific installation. If interference does occur to radio or television reception, which can be determined by turning the equipment off and on, the user is encouraged to try to correct the interference by one or more of the following measures:

- Reorient or relocate the receiving antenna.
- Increase the separation between the equipment and the receiver.
- Connect the equipment to an outlet on a circuit different from that to which the receiver is connected.
- Contact the Customer Care Center at 1-800-732-0144 or an experienced radio/TV technician for assistance.

Caution: Unauthorized changes or modifications to the equipment, not approved by Radio Systems® Corporation, could result in not meeting compliance with FCC regulations and could void the user's authority to operate the equipment.

This device complies with part 15 of the FCC Rules. Operation is subject to the following two conditions:

1. This device may not cause harmful interference.
2. This device must accept any interference received, including interference that may cause undesired operation.

Battery Disposal

This system operates on two NiMH battery packs (120mAh capacity for the Collar Receiver and 250mAh capacity for the Remote Transmitter). Replace only with equivalent battery received from calling the Customer Care Center at 1-800-732-0144.

Separate collection of spent batteries is required in many regions; check the regulations in your area before discarding spent batteries. Please see below for instructions on how to remove the battery from the product for separate disposal.

At end of product life, use these battery removal instructions for final disposal (please do not open the Collar Receiver or Remote Transmitter until you have received the replacement):

- Using a #1 Phillips screwdriver, remove the case screws.
- Remove the case back or cover.
- Remove the old battery pack. *Note: When removing the old battery pack, care must be taken when gripping the connector firmly to avoid damaging the wires. Shorting the battery wires may cause fire or explosion.*

Note: These instructions are not valid for repair or battery replacement. Replacing the battery with a battery not specifically approved by Radio Systems® Corporation may cause fire or explosion. Please call the Customer Care Center at 1-800-732-0144 to avoid voiding your warranty.

SportDOG™ Add-A-Dog® Receivers & Beeper

Note: The SportHunter® 800 Transmitter can be used with any SportDOG™ Add-A-Dog® Receiver & Beeper below.

| | Description | Part Number |
|---|---|-------------|
|  | FieldTrainer® Add-A-Dog - Standard Power | SDR-FS |
|  | FieldTrainer® Add-A-Dog - High Power | SDR-FH |
|  | HoundHunter® Add-A-Dog - High Power | SDR-H |
|  | SportHunter® Add-A-Dog - Standard Power | SDR |
|  | WetlandHunter® 2000 Add-A-Dog - High Power | SDR-CH |
|  | WetlandHunter® 400 & 800 Add-A-Dog - High Power | SDR-FC |
|  | UplandHunter™ Add-A-Beeper™ | SDR-AB |

Radio Systems Corporation
10427 Electric Avenue
Knoxville, TN 37932
1-800-732-0144
www.sportdog.com
400-804/3

Protected by U.S. Patents #7,017,524 and #6,901,883

©2006 Radio Systems Corporation