

**SPORTHUNTER®**  
**SD-800SMS**  
**Operating Guide**



**Gear the way you'd design it.™**

**Please read this entire guide before beginning**

Thank you for choosing SportDOG Brand®. Used properly, this product will help you train your dog efficiently and safely. To ensure your satisfaction, please review this owner's manual thoroughly. If you have questions regarding this product's operation, please see this manual's Frequently Asked Questions or Troubleshooting section, contact Sit Means Sit toll free at 1-866-748-6748, or visit Sit Means Sit's website at [www.sitmeanssit.com](http://www.sitmeanssit.com).

To get the most protection out of your warranty, please register your product within 30 days at [www.sportdog.com](http://www.sportdog.com). By registering and keeping your receipt, you will enjoy the product's full warranty and should you ever need to call, we will be able to help you faster. Most importantly, SportDOG™ will never give or sell your valuable information to anyone. Complete warranty information is available online at [www.sportdog.com](http://www.sportdog.com).

## Table of Contents

How the System Works .....	3
Key Definitions .....	4
Prepare the Remote Transmitter.....	5
Prepare the Collar Receiver.....	6
Fit the Collar Receiver.....	8
Program the Remote Transmitter .....	8
Match the Collar Receiver and the Remote Transmitter .....	9
Program the Collar Receiver for Two or Three-Dog Operation .....	10
Frequently Asked Questions .....	11
Troubleshooting.....	12
Terms of Use and Limitation of Liability .....	13
FCC Compliance.....	13
Battery Disposal.....	14
Add-A-Dog® Receiver.....	16

## How the System Works

The SportDOG SportHunter® 800SMS has been proven safe, comfortable and effective for all dogs over 8 pounds. The Remote Transmitter sends a signal, activating the Collar Receiver to deliver a harmless stimulation. With proper training, a dog will learn to associate this signal with a command. Like all SportDOG products, this model features adjustable stimulation levels so you can tailor the stimulation level to your dog's temperament, eliminating the risk of over-correction.

**Important: Terrain, weather, vegetation, transmission from other radio devices, and other factors will affect the maximum range.**

## Key Definitions

**Remote Transmitter:** Transmits the radio signal to the Collar Receiver. It is waterproof and can be submerged in water.

**Transmitter Indicator Light:** Indicates that a button is pressed and also serves as a low-battery indicator.

**Intensity Dial:** Provides multiple levels of stimulation to suit your dog's temperament and individual training situation.

**Upper Button:** This button is factory-set to deliver continuous high stimulation.

**Lower Button:** This button is factory-set to deliver continuous low stimulation.

**Side Button:** This button is factory-set to deliver momentary (nick) low stimulation.

**Collar Receiver:** Receives the radio signal from the Remote Transmitter and delivers the stimulation and/or a tone for correcting your dog. It is waterproof and can be submerged in water.

**On/Off Button:** Momentarily pressing and holding this button turns the Collar Receiver on and off.

**Contact Points:** The contacts through which the Collar Receiver delivers stimulation when a Remote Transmitter button programmed for Continuous or Momentary Stimulation is pressed.

**Receiver Indicator Light:** Indicates when the Collar Receiver has been turned on or off and also serves as a low-battery indicator.

**Charging Jacks:** For connecting the charger. Although the Collar Receiver and Remote Transmitter are waterproof without it, keep the cover in place when not charging to keep debris out of the opening.

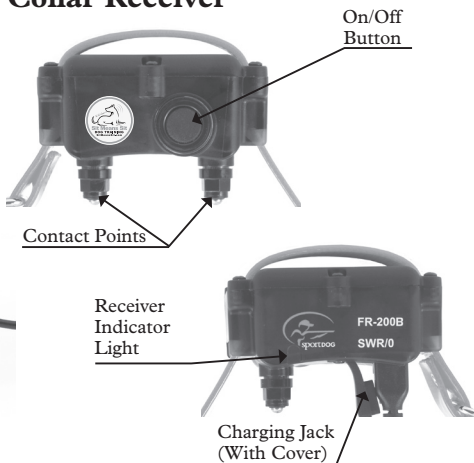
**Continuous Stimulation:** When a button is programmed for Continuous Stimulation, you control both when and how long stimulation is delivered to your dog through the Collar Receiver's Contact Points. When a Continuous Stimulation button is pressed for 8 seconds or more, the Remote Transmitter will "time-out." The button will need to be released and pressed again before additional stimulation can be delivered.

**Momentary (Nick) Stimulation:** When a button is programmed for Momentary Stimulation, stimulation is delivered for 5/100 of a second, regardless of how long the button is pressed.

### Remote Transmitter



### Collar Receiver



## Step 1 Prepare the Remote Transmitter

### 1 Charge the Remote Transmitter

1. Lift the rubber cover protecting the Charging Jack.
2. Connect one of the charger connectors to the Charging Jack.
3. Plug the charger into a standard 120-volt AC wall outlet.
4. Charge the Remote Transmitter for 24 hours for the first charge. Recharges take only 6 hours.  
*Note: The Transmitter Indicator Light will flash after 6 hours of charging. For the first charge, continue to charge the Remote Transmitter for an additional 18 hours.*
5. When charging is completed, replace the rubber cover.



*Note: Approximate battery life between charges is 40 to 60 hours, depending on frequency of use.*

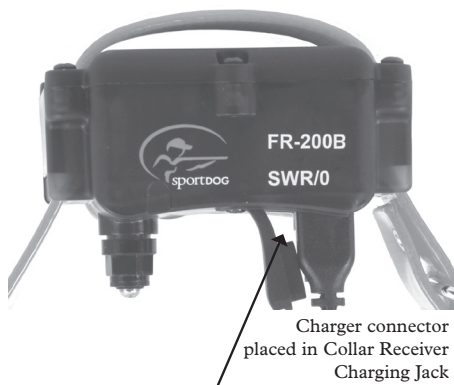
### Transmitter Indicator Light

Remote Transmitter Function	Indicator Light Response
Continuous Stimulation or Tone Only button pressed	Solid green in color
Momentary (Nick) Stimulation button pressed	Single green flash
Low battery – Continuous Stimulation or Tone Only button pressed	Flashes green continuously

## Step 2 Prepare the Collar Receiver

### Charge the Collar Receiver

1. Lift the rubber cover protecting the Charging Jack.
2. Connect the charger connector to the Charging Jack.
3. Plug the charger into a standard 120-volt AC wall outlet.
4. Charge the Collar Receiver for 24 hours for the first charge. Recharges take only 6 hours.  
*Note: The Receiver Indicator Light will flash after 6 hours of charging. For the first charge, continue to charge the Collar Receiver for an additional 18 hours.*
5. When charging is completed, replace the rubber cover.

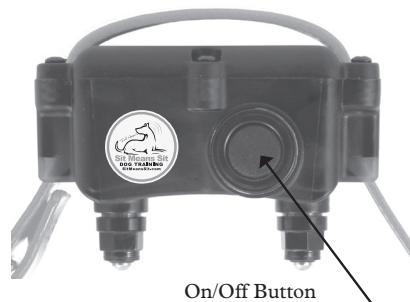


If the Collar Receiver is used in or around salt water, the Collar Receiver should be rinsed with fresh water following each use. Prior to rinsing, the rubber charging jack cover should be removed from the power plug socket and left out until the Collar Receiver has air dried.

### To Turn the Collar Receiver On:

1. Press and hold the On/Off Button until the Receiver Indicator Light comes on and the Collar Receiver beeps 5 times.
2. Release the On/Off Button.

The Receiver Indicator Light will flash until the Collar Receiver is turned off. The flashing light indicates the Collar Receiver is ready to receive a radio signal from the Remote Transmitter.



### To Turn the Collar Receiver Off:

1. Press and hold the On/Off Button until the Receiver Indicator Light comes on and the Collar Receiver beeps 2 times.
2. Release the On/Off Button.

To extend the life between charging cycles, turn the Collar Receiver off when it is not in use.

*Note: Approximate battery life between charges is 40 hours, depending on frequency of use.*

## Receiver Indicator Light

Operational Mode	LED Color	LED Function	Battery Status	Speaker Function
Unit is turned on via On/Off Button	Green	LED is solid in color during beep sequence	Good or Low	Beeps 5 times
Unit is turned off via On/Off Button	Green	LED is solid in color during beep sequence	Good	Beeps 2 times
Unit is turned off via On/Off Button	Green	LED is solid in color during beep sequence	Low	Beeps 2 times
Unit is on	Green	LED flashes once per second	Good	N/A
Unit is on	Green	LED flashes once per second	Low	N/A
Unit is delivering continuous stimulation	Green	LED is solid in color for as long as button is pressed	Good or Low	N/A
Unit is delivering momentary stimulation	Green	LED will quickly flash once no matter how long button is pressed	Good or Low	N/A
Unit is delivering tone	N/A	N/A	Good or Low	Unit will beep for as long as button is pressed
Unit is charging < 6 hours	Green	LED is solid		
Unit is charging > 6 hours	Green	LED is flashing once per second		

## Rechargeable Batteries

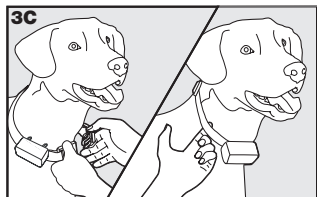
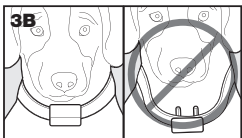
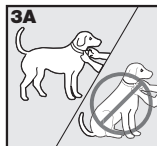
- The rechargeable Nickel Metal Hydride (NiMH) batteries are not memory sensitive and do not require depletion before charging.
- The batteries come partially charged from the factory, but will require a full charge before the first use (24 hours).
- Remember - Always keep batteries away from flame.
- **When storing the unit for long periods, remember to regularly give batteries a full charge (24 hours). This should be done once every 4 to 6 weeks.**
- Excessive overcharging can shorten battery life. After initial charge, it is not recommended to leave the battery plugged in for more than 12 hours.
- If your equipment has not been charged for an extended period, you may experience a decrease in battery life the first few uses. Afterwards, the battery life will return to previous capacity levels.
- You should expect hundreds of recharge cycles from your batteries. However, all rechargeable batteries lose capacity over time relative to the number of recharge cycles they experience. This is normal. If your operating time drops to half of the original life, contact Sit Means Sit to purchase a new battery.
- The batteries should last for a period of 3-5 years. When a battery needs replacement, you can order a new pack by calling Sit Means Sit at 1-866-748-6748. Please do not open the Collar Receiver or Remote Transmitter until you have received the replacement.

## Step 3 Fit the Collar Receiver

**Important: The proper fit and placement of the Collar Receiver is important for effective training. The Contact Points must have direct contact with your dog's skin.**

To ensure a proper fit, follow these steps:

1. With your dog standing (3A), center the Collar Receiver so the Contact Points are underneath your dog's neck, touching the skin (3B). If your dog has a long or thick coat, you have two options to ensure consistent contact: either trim the hair around the Contact Points or switch to the longer Contact Points included with your system.
2. The Collar Receiver should fit snugly, yet loose enough to allow one finger to fit between the strap and your dog's neck (3C).
3. Allow your dog to wear the collar for several minutes, and then recheck the fit. Check the fit again as your dog becomes more comfortable wearing the Collar Receiver.



### Care and Cleaning

To ensure the effectiveness of this product and the comfort and safety of your dog, check the fit of his collar frequently. This Guide describes proper collar fitting. If you notice that your dog is experiencing skin irritation, discontinue use of the collar for a few days. If the condition persists beyond 48 hours, see your veterinarian.

#### To prevent skin irritation from occurring:

- The Collar Receiver should not be worn for more than 8 hours out of every 24-hour period.
- Your dog's neck and the Contact Points must be washed weekly with a washcloth and mild hand soap, then rinsed thoroughly.

## Step 4 Program the Remote Transmitter

*Note: The Transmitter is factory set to mode 6. The mode of the Remote Transmitter can be changed to fit your type or style of training.*

#### To change the mode:

1. Referring to the table on the following page, adjust the Intensity Dial to the mode you want to use.
2. Turn the Remote Transmitter over.
3. With a pen or the tine on the buckle of your collar strap, depress and release the mode button. When the mode button is pressed, the Transmitter Indicator Light will be solid in color. When it is released, it will flash the mode selected.

For example, if mode 5 is desired, adjust the Intensity Dial to Level 5. Once the mode button has been depressed, the Transmitter Indicator Light will be solid, and once the mode button is released, the Transmitter Indicator Light will flash five times.

*Note: Continuous Stimulation will transmit for no more than 8 continuous seconds no matter how long the button is pressed. To reactivate, release and repress the button.*



Mode	Upper Button Function	Lower Button Function	Side Button Function	# of Dogs
1	Momentary High Stimulation (Level set by knob)	Momentary Low Stimulation (Level set by knob)	Continuous High Stimulation (Level set by knob)	1
2	Momentary High Stimulation (Level set by knob)	Momentary Low Stimulation (Level set by knob)	Continuous Low Stimulation (Level set by knob)	1
3	Continuous High Stimulation (Level set by knob)	Continuous Low Stimulation (Level set by knob)	Momentary High Stimulation (Level set by knob)	1
4	Dog 1 Continuous Low Stimulation (Level set by knob)	Dog 2 Continuous Low Stimulation (Level set by knob)	Dog 2 Continuous Low Stimulation (Level set by knob)	3
5	Dog 1 Momentary Low Stimulation (Level set by knob)	Dog 2 Momentary Low Stimulation (Level set by knob)	Dog 3 Momentary Low Stimulation (Level set by knob)	3
6	Continuous High Stimulation (Level set by knob)	Continuous Low Stimulation (Level set by knob)	Momentary Low Stimulation (Level set by knob)	1
7	Continuous Low Stimulation (Level set by knob)	Momentary Low Stimulation (Level set by knob)	Tone only	1

*Note: Modes 4, 5 and 7 provide 8 levels of stimulation, which correspond to the setting of the Intensity Dial. Modes 1, 2, 3 and 6 provide more "increments" to choose from -- a total of 16 levels of stimulation. For example, in mode 6 with the Intensity Dial set at 2, the bottom button provides level 3 of 16 and the top button provides level 4 of 16.*

## Step 5 Match the Collar Receiver and the Remote Transmitter

To reset the Collar Receiver to work with a new Remote Transmitter or to reprogram a new Collar Receiver to work with your existing Remote Transmitter:

- A. Turn the Collar Receiver off.
- B. Press and hold the On/Off Button. The Receiver Indicator Light will come on, then turn off after 4-5 seconds. If the On/Off Button is released too early, the Receiver Indicator Light will begin flashing as normal. If this occurs, start over and repeat from A.
- C. After the Receiver Indicator Light has turned off, release the On/Off Button.
- D. Press and hold the Upper Button on the Remote Transmitter until the Receiver Indicator Light flashes 5 times. You may need to hold both units 2-3 feet from each other before this occurs. Once the Receiver Indicator Light has flashed 5 times, the Collar Receiver has been reset and will begin flashing as normal. If the Receiver Indicator Light does not flash 5 times, start over and repeat from A.

## Step 6 Program the Collar Receiver for Two or Three-Dog Operation

Add-A-Dog® receiver(s) must be purchased to train additional dogs.

**Please refer to the back cover for the compatible Add-A-Dog Collar Receiver for this system.**

1. Program the Remote Transmitter to mode 4 or 5 (see page 9).
2. Program the first Collar Receiver.
  - A. Turn the Collar Receiver off.
  - B. Press and hold the On/Off Button. The Receiver Indicator Light will come on, then turn off in 4-5 seconds. If the On/Off Button is released too early, the Receiver Indicator Light will begin its normal flashing. If this occurs, start over and repeat from A.
  - C. After the Receiver Indicator Light has turned off, release the On/Off Button.
  - D. Press and hold the **Upper Button** on the Remote Transmitter until the Receiver Indicator Light flashes 5 times. You may need to hold both units 2-3 feet from each other. If the Receiver Indicator Light does not flash 5 times, start over and repeat from A.
3. Program the second Collar Receiver using **A** through **D** above, but using the **Lower Button** in place of the Upper Button.
4. Program the third Collar Receiver using **A** through **D** above, but using the **Side Button** in place of the Lower Button.

## Frequently Asked Questions

<b>Is the Collar Receiver waterproof?</b>	Yes. If the rechargeable battery pack ever needs to be replaced, make sure the o-ring and o-ring groove are free from dirt and debris.
<b>Can I use the SportHunter® 800SMS on aggressive dogs?</b>	We do not recommend any of our products to be used on aggressive dogs. We recommend you contact your local veterinarian or Sit Means Sit certified trainer to determine if your dog might be aggressive.
<b>Can I attach a leash to the SportHunter® 800SMS?</b>	DO NOT attach a leash to the SportHunter® 800SMS. You may put a separate non-metallic collar on your dog's neck and attach a leash. Be sure the extra collar does not interfere with the Contact Points.
<b>Can I use the SportHunter® 800SMS with more than one dog (up to 3)?</b>	Yes, Add-A-Dog® Collar Receivers must be purchased and the Remote Transmitter must be changed to mode 4 or 5. Please refer to back cover for the compatible Collar Receiver for your system.
<b>How long can I continuously deliver stimulation to my dog?</b>	The maximum amount of time you can press the Continuous Stimulation Button and deliver stimulation to your dog continuously is 8 seconds. After 8 seconds, the Remote Transmitter will "time-out," and the Continuous Stimulation Button must be released and pressed again.
<b>What do I do if my dog's neck becomes red and irritated?</b>	This condition is due to the Contact Points irritating the skin. Discontinue use of the Collar Receiver for a few days. If the condition persists beyond 48 hours, see your veterinarian. Once the skin returns to normal, resume use, and monitor the skin condition closely. For best results in the prevention of skin irritation, do not leave the collar on the dog unattended, or overnight. Alter the collar's location slightly every few hours, and check the dog daily. Some factors that may alter the condition of the individual dog include allergic reactions, skin types and water exposure.
<b>Can my Collar Receiver be used around salt water?</b>	If the Collar Receiver is used in or around salt water, the Collar Receiver should be rinsed with fresh water following each use. Prior to rinsing, the rubber charging jack cover should be removed from the power plug socket and left out until the Collar Receiver has air dried.

# Troubleshooting

The answers to these questions should help you solve any problem you have with this system. If they do not, please contact Sit Means Sit at 1-866-748-6748 or visit our website at [www.sitmeanssit.com](http://www.sitmeanssit.com).

<p><b>My dog is not responding when I press a button.</b></p>	<ul style="list-style-type: none"> <li>• Check to see if the Collar Receiver has been turned on.</li> <li>• If your range has reduced from the first time you have used it, please check to see if the battery is low in either the Remote Transmitter or Collar Receiver.</li> <li>• Many factors can impact the range you have with the SportHunter® 800SMS. For a list of these factors, please refer to “How the System Works”.</li> <li>• Make sure the Collar Receiver’s Contact Points are placed snugly against your dog’s skin. Refer to “Fit the Collar Receiver” for more information.</li> <li>• If you notice your operating time dropping to about half the original time, your Collar Receiver battery needs to be replaced. Contact Sit Means Sit to purchase a new one.</li> </ul>
<p><b>The Collar Receiver will not turn on.</b></p>	<ul style="list-style-type: none"> <li>• Make sure the Collar Receiver has been charged. For the initial charge, be sure to charge it for 24 hours. Future charges only take 6 hours.</li> </ul>
<p><b>The Collar Receiver is not responding to the Remote Transmitter.</b></p>	<ul style="list-style-type: none"> <li>• Verify the Collar Receiver has been turned on. Refer to “Turning the Collar Receiver On and Off”.</li> <li>• Refer to “Match the Collar Receiver and the Remote Transmitter.”</li> </ul>

# Terms of Use and Limitation of Liability

## 1. Terms of Use

This Product is offered to you conditioned upon your acceptance without modification of the terms, conditions and notices contained herein. Usage of this Product implies acceptance of all such terms, conditions, and notices.

## 2. Proper Use

This Product is designed for use with dogs where training is desired. The specific temperament of your dog may not work with this Product. We recommend that you not use this Product if your dog is less than 8 pounds or if your dog is aggressive. If you are unsure whether this is appropriate for your dog, please consult your veterinarian or Sit Means Sit certified trainer.

Proper use includes reviewing the entire Operating Guide provided with your Product and any specific Caution statements.

## 3. No Unlawful or Prohibited Use

This Product is designed for use with dogs only. This dog training device is not intended to harm, injure, or provoke. Using this Product in a way that is not intended could result in violation of Federal, State or local laws.

## 4. Limitation of Liability

In no event shall Radio Systems® Corporation be liable for any direct, indirect, punitive, incidental, special or consequential damages, or any damages whatsoever arising out of or connected with the use or misuse of this Product. Buyer assumes all risks and liability from the use of this Product.

## 5. Modification of Terms and Conditions

Radio Systems Corporation reserves the right to change the terms, conditions and notices under which this Product is offered.

# FCC Compliance

This device complies with part 15 of the FCC Rules. Operation is subject to the following two conditions: (1) This device may not cause harmful interference, and (2) this device must accept any interference received, including interference that may cause undesired operation.

This equipment has been tested and found to comply with the limits for a Class B digital device, pursuant to part 15 of the FCC Rules. These limits are designed to provide reasonable protection against harmful interference in a residential installation. This equipment generates, uses and can radiate radio frequency energy and, if not installed and used in accordance with the instructions, may cause harmful interference to radio communications. However, there is no guarantee that interference will not occur in a specific installation. If interference does occur to radio or television reception, which can be determined by turning the equipment off and on, the user is encouraged to try to correct the interference by one or more of the following measures:

- Reorient or relocate the receiving antenna.
- Increase the separation between the equipment and the receiver.
- Connect the equipment to an outlet on a circuit different from that to which the receiver is connected.
- Contact the manufacturer or an experienced radio/TV technician for assistance.

Caution: Unauthorized changes or modifications to the equipment may violate FCC regulations and could void the user’s authority to operate the equipment.

## Battery Disposal

**ATTENTION:** This device contains a Nickel Metal Hydride (NiMH) battery; never incinerate, puncture, deform, short-circuit, or charge with an inappropriate charger. Fire, explosion, property damage, or bodily harm may occur if this warning is not followed.

This system operates on two NiMH battery packs (120mAh capacity for the Collar Receiver and 250mAh capacity for the Remote Transmitter). Only replace with battery received from calling Sit Means Sit at 1-866-748-6748.

Separate collection of spent batteries is required in many regions; check the regulations in your area before discarding spent batteries. Please see below for instructions on how to remove the battery from the product for separate disposal. If you wish to ship your spent batteries for disposal, contact the manufacturer at 1-800-732-0144.

### **AT END OF PRODUCT LIFE, USE THESE BATTERY REMOVAL INSTRUCTIONS FOR FINAL DISPOSAL (DO NOT OPEN THE COLLAR RECEIVER OR REMOTE TRANSMITTER UNTIL YOU HAVE RECEIVED THE REPLACEMENT):**

- Using a #1 Phillips screwdriver, remove the case screws.
- Remove the case back or cover.
- Remove the old battery pack. *Note: When removing the old battery pack, care must be taken when gripping the connector firmly to avoid damaging the wires. Shorting the battery wires may cause fire or explosion.*


*Note: These instructions are not valid for repair or battery replacement. Replacing the battery with a battery not specifically approved by Radio Systems® Corporation may cause fire or explosion. Please call Sit Means Sit at 1-866-748-6748 to avoid voiding your warranty.*

This product is protected by the following patents:  
U.S. Patent Numbers: 6,901,883 and 7,017,524.



# Add-A-Dog<sup>®</sup> Receiver

*Note: The SportHunter<sup>®</sup> 800SMS Transmitter can be used with the following Add-A-Dog<sup>®</sup> Receiver:*

Description	Part Number
 Sit Means Sit Add-A-Dog	SDR-SMS

Other products can be found at [www.sitmeanssit.com](http://www.sitmeanssit.com)